

6149.6149 Stained Cork Tiles

Specifications, Warranty, Installation, Maintenance

GENERAL INFORMATION

Cork is, by volume, 85% air. It is one of the softest resilient floors made. Shhhhh! All that air makes cork a great sound insulator, so you will hear less of your neighbors.

Cork has been installed at the Morgan Library for well over a century.

Cork bark is peeled every 12 years; not a single tree is cut down. Cork flooring is composed of 100% post-industrial recycled content from wine-stopper production.

Tile Sizes: 12" x 12", 18" x 18", 24" x 24", 12" x 24", 12" x 36", 18" x 24"
Custom sizes available.

Colorways:



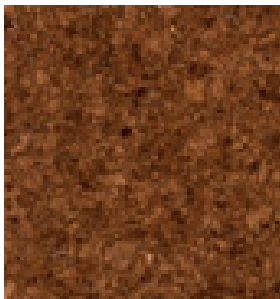
Jack Frost



Raven



Port



Chestnut



Acorn



Antiquity

6149.6149 Stained Cork Tiles

Section I: Specifications

SPECIFICATIONS & CLASS PROPERTIES

Domestic – Class 23 (a. / Commercial – Class 31 (b.)

General Properties- EN 12104	Standard Test Method	Unit	Specifications
Dimensions	EN 427	% / mm	≤ 0.2% up to 1.00mm
Overall Thickness	EN 428	mm	0; + 0.25
Squareness and Straightness	EN 427	mm	≤ 0.50 up to 1.00mm
Apparent Density	EN 672	Kg/m ³	≤ 95% nom.
Dimensional Stability	EN 434	%	≤ 0.4
Curling after exposure to heat	EN 434	mm	≤ 6
Moisture content	EN 12105	%	2.5-6
Classification Properties – EN 12104	Standard Test Method	Unit	Specifications
Overall thickness	EN 42	mm	≥ 4.0
Apparent Density	EN672	kg/m ³	≥ 500
Residual Indentation	EN433	mm	≤ 0.40
Safety Properties – ENI 4041	Standard Test Method	Unit	Specifications
Fire resistance	DIN 4102-1	Class	B1
Static Coefficient of Friction	ASTM C1028-89	Coefficient	Dry 0.69 Wet 0.79
Formaldehyde emission	DIN EN 717-1	Class	E1
Critical Radiant Flux	ASTM E 648	Watts CM ²	0.53
Optional properties	Standard Test Method	Unit	Specifications
Thermal resistance	EN 12664	(m ² K./W	R ≤ 0.150
Impact Insulation Class	ASTM E989-89	dB	54
Sound Transmission Class	ASTM E413-87	dB	51
Noise Reduction Class	ASTM C423-90a	dB	0.05
Gloss	Glossometer (60°.	°G	•20° (Matte. 30°(Satin. ± 5°)

6149.6149 Stained Cork Tiles

Section II: Manufacturer's Warranty

MANUFACTURER'S WARRANTY

BY ACCEPTING THIS ORDER ("ORDER.", CUSTOMER HEREBY AGREES THAT IT IS SUBJECT TO ALL OF THE "TERMS" AND "CONDITIONS" BELOW AND THAT THIS ORDER CONSTITUTES A CONTRACT BINDING UPON Aronson's ("COMPANY". AND CUSTOMER LIMITED WARRANTY.

Manufacturer warrants its cork products structurally, in their original manufactured condition, to be free from defects in workmanship and material for a period of 25 years from date of installation. If any floor coverings are defective in workmanship and material and covered by this Limited Warranty, Company shall, at its sole option, either refund the purchase price or supply, at its expense, such material as, in Company's sole judgment, is necessary to replace any defective floor covering. This Limited Warranty does not cover the cost of labor required to replace any flooring. This Limited Warranty is subject to the following conditions: (i. the floor covering must have been installed and maintained in accordance with the Company's instructions in an area for which Company has specified as suitable for use; (ii. the defect must not have been caused by excessive moisture, extremes of temperature, chemical reaction, corrosion, or from any abuse or normal usage, (iii. any claim must be brought to Company's attention, in writing, within the stated period; and (iv. Company must be given the opportunity to inspect the installation and investigate the claim.

THE LIMITED WARRANTY SET FORTH HERIN IS IN LIEU OF ALL OTHER WARRANTIES, EXPRESS OR IMPLIED, INCLUDING WITHOUT LIMITATION ANY IMPLIED WARRANTIES OF MERCHANTABILITY OR FITNESS FOR A PARTICULAR PURPOSE (INCLUDING SLIP RESISTANCE, FIRE RESISTANCE OR ANY OTHER SAFETY FACTORS NOT SET FORTH IN COMPANY'S SPECIFICATIONS. AND ALL SUCH WARRANTIES ARE HEREBY DISCLAIMED AND EXCLUDED BY COMPANY. THERE ARE NO WARRANTIES WHICH EXTEND BEYOND THE DESCRIPTION OF THE FACE HEREOF.

LIMITATION OF REMEDIES.

The sole and exclusive remedy for any damage or loss in any way connected with Company's product, whether due to Company's negligence or breach of any other duty, shall, at the Company's sole option, consist of either (i. a refund of purchase price or (ii. the delivery, at its expense, of such material as, in Company's sole judgment, is necessary to replace any defective floor covering. Company's liability shall in no event exceed that expressly set forth herein, irrespective of the basis for any other claim, including but not limited to claims for breach of contract, breach of warranty, negligence, strict liability or tort. Under no circumstances shall Company be liable for incidental or consequential damages. No employee, agent or any other person is authorized to state or imply any additional warranties on behalf of the Company, or assume for the Company any other liability in connection with any of its products, unless in writing and signed by an officer of Company.

GENERAL. This ORDER constitutes the entire understanding and agreement between the parties and supersedes any and all prior or contemporaneous oral or written representations, understanding, agreements or communications between the parties concerning the subject matter hereof. Company objects to, and shall not be bound by, any terms or conditions on Customer's purchase order or invoice which attempt to impose on Company any terms or conditions at variance with or materially different from

Company's terms and conditions as set forth herein. The terms and conditions set forth herein are intended to be complete and exclusive of any additional terms and conditions and cannot be subsequently amended or modified, except in writing signed by an officer of Company. If any provision hereof is determined to be invalid or illegal by a court of competent jurisdiction, the remaining terms and conditions hereof shall remain enforceable and in full force and effect.

6149.6149 Stained Cork Tiles

Section II: Manufacturer's Warranty cont'd.

MANUFACTURER'S WARRANTY cont'd.

“DISCLAIMERS AND EXCLUSIONS”

Aronson's accepts no responsibility for costs related to baseboard removal, appliance movement etc. In the event manufacturing defects are found, Aronson's will at its discretion, replace any part or the whole floor with the same, or similar product as is deemed necessary.

Wear of the surface finish is a normal occurrence. It is up to the owner to monitor the finish for wear and re-coat as necessary to prevent wear-through.

Installation implies acceptance of goods and Aronson's is not responsible for goods installed with known defects. Sufficient overages (10 -15% on linear / 15-20% on diagonal. must be included in the original order as per the Aronson's Installation Guidelines. It is the installer and owners responsibility to make sure humidity, temperature, concrete vapor emission (if applicable., acclimation of goods and subfloor preparation guidelines are met as stated in the Installation Guidelines.

Color variations and shading are a natural occurrence in cork and not considered a manufacturing defect. As cork is a natural product, color may vary from tile to tile and shipment to shipment and may not match display or showroom samples. Aronson's makes no warranty with respect to matching flooring to other flooring products, cabinets or any other household décor. Aronson's will send samples for approval.

Pitting, tannin bleed, dark spots and non-alignment of linear designs in cork are natural attributes of cork. These are not considered manufacturing defects and are excluded from any warranty written or implied.

Normal exposure to sunlight will cause cork flooring to fade. To reduce fading it is the responsibility of the owner to protect the floor from UV light which causes fading in any natural product.

Wet mopping is not acceptable and can cause delamination, premature finish wear and other product failures. Cleaning should be done with a misting bottle.

Rubber back mats can discolor urethane finished floors and are not recommended, such discoloration is not considered a manufacturing defect.

Excessive wear and/or delamination caused by rolling chairs is excluded from this warranty. Chair pads must be used under rolling chairs to prevent damage to the floor.

Aronson's warranties do not cover indentation, scratches, stains or damage caused by; negligence, fire, water, moisture, excessive heat or excessive dryness. Corrosion, pebbles, sand or other abrasives, pets, insects, pests, spiked heeled shoes, weather conditions or natural disasters, color variations, naturally occurring cork characteristics, improper maintenance, failure to follow installation and/or maintenance instructions, wet mopping, insufficient protection, misuse, or improper alterations of the originally manufactured product. This warranty does not cover damage by low or excessive humidity.

6149.6149 Stained Cork Tiles

Section II: Manufacturer's Warranty cont'd.

MANUFACTURER'S WARRANTY cont'd.

WEAR WARRANTY

The following warranty applies solely to the factory applied finish onto the cork tiles. This wear warranty is non-transferable and applies only to the original purchaser. Both the merchant receipt for goods purchased and the Site Moisture and Humidity at time of installation document, should be maintained in the end users records in order to file a claim.

Supreme Finish

35 Year Residential

Cork floors with Supreme Finish are warranted by Aronson's not to wear through during normal use for 35 years in a residential application. Finish wear through is defined as 100% removal of the finish over a minimum of 3% of the total installation. A change in gloss level is not considered a defect and is therefore not covered by this warranty.

Commercial Finish

10 Year Residential / 5 Year Commercial

Cork floors with Commercial Finish are warranted by Aronson's not to wear through during normal use for 10 years in a residential application and 5 years in commercial application. This 5 year commercial wear warranty requires that the finish be refreshed as necessary as per Cork Maintenance Guide and in accordance with Manufacturer's Installation Instructions using only recommended finishes. Finish wear through is defined as 100% removal of the finish over a minimum of 3% of the total installation. A change in gloss level is not considered a defect and is therefore not covered by this warranty.

This wear warranty is subject to the following conditions:

1. The floor must be installed according to Cork Installation Guide. Proper installation includes but is not limited to:
 - A. A moisture test must be performed to determine if excessive moisture exists in the subfloor.
 - B. When installing over concrete, the substrate must be tested for moisture prior to installation pin/probe type meter. .
 - C. In floating floor installations, polyethylene sheeting or any type of non-porous vapor barrier must not be used over wood subfloors.
 - D. Wood subfloors must be tested for moisture content using a non-invasive moisture meter or a pin/probe type meter. Moisture readings must not exceed 11% over the whole floor.
 - E. A hygrometer test to confirm ambient humidity. Results must indicate ambient humidity between 35 – 50%.
2. The flooring is to be installed and used only indoors, in a dry, climate controlled area.
3. The flooring must be maintained according to the Manufacturer's Maintenance and Warranty Guide.
4. This limited warranty does not apply to water damage caused by wet cleaning, or damage occurring from the use of any inappropriate chemical or cleaner of any kind.
5. This limited warranty does not apply to damage caused by moisture, water or alkaline in the subfloor using a or underneath the flooring, including but not limited to damage from subfloor hydrostatic pressure (water or moisture under the floor that is being transmitted to the surface through exerted pressure. or other conditions that result in water or moisture being under the floor.
6. This limited warranty applies only to Aronson's Cork floors. Accessories such as moldings are expressly excluded from this warranty.
7. Installation of flooring that contains manufacturing defects of any kind is expressly excluded from this warranty. This warranty applies solely to hidden defects which are not visible before, during or after installations.
8. This limited warranty applies only to first quality goods.

ARONSON'S FLOOR COVERING

135 West 17th Street New York, NY 10011 T (212) 243 4993 F (212) 675 5939 aronsonsfloors.com

6149.6149 Stained Cork Tiles

Section II: Manufacturer's Warranty cont'd.

MANUFACTURER'S WARRANTY cont'd.

WARRANTY EXCLUSIONS

The following conditions are not covered by this Wear Warranty:

1. Damage due to adhesive or tape, scratches, gouges, scuffs, punctures, cuts, indentations, burns, accidents, lack of proper furniture pads, animal claws or any intentional or unintentional misuse of product.
 2. Loss or changes in gloss levels over time is consistent with normal wear and tear and is not a product flaw.
 3. Problems due to moisture, mildew, alkaline substances, hydrostatic pressure, expansion or contraction between planks or tiles, or humidity levels above or below those recommended.
 4. Cork flooring will fade with sunlight, UV exposure and age. This is normal and consistent with all natural products. UV Protection on windows is recommended.
 5. Noncompliance with installation instructions, recommended site conditions (before, during and post installation.), and maintenance guidelines as recommended by Aronson's.
 6. Aronson's cannot assume responsibility for the suitability of flooring material and accompanying products for each installation as Aronson's has no control over installer's proper application and/or site conditions.
 7. Cracking, warping, soiling, fading, improper maintenance or abuse such as skates, golf shoes or pets.
 8. Floor covering installed in inappropriate locations.
 9. Mats, rugs or any type of decorative or protective floorcovering materials placed on floor.
 10. Unapproved modification or repair.
 11. Damage due to exposure to excessive heat or cold, wetness or dryness. Ambient humidity should be maintained in the 35 – 50% range throughout the year.
 12. Damage due to flood, fire, leaks or Acts of God.
 13. Damage due to sliding furniture or appliances across floor.
 14. Any finish or coating applied after installation regardless of manufacturer or suitability of application.
- No other Wear Warranty other than that shown here is expressed or implied including any warranty, merchantability or suitability of the product for a particular purpose, and no other remedies shall be provided except those provided herein. This warranty shall not be deemed to have failed its essential purpose while Aronson's is willing to repair, or replace defective goods.

HOW TO MAKE A CLAIM

In the event that a product deficiency or failure is suspected, contact Aronson's in writing at the earliest appearance of defect. You must provide merchant sales receipt and a Site Moisture and Humidity document. Once the manufacturer verifies the claim, they will notify Aronson's and if necessary, an inspection will be arranged. If a product defect is verified, Aronson's or the manufacturer will at its discretion repair or supply replacement material. If the floor needs to be replaced in whole or in part, Aronson's will provide material of like design and color. In the event, like material is no longer available, Aronson's will provide material of a similar type of equal or higher value. Aronson's will repair or replace a floor one time during the duration of this Wear Warranty.

ARONSON'S FLOOR COVERING

135 West 17th Street New York, NY 10011 T (212) 243 4993 F (212) 675 5939 aronsonsfloors.com

6149.6149 Stained Cork Tiles

Section III: Installation

INSTALLATION INSTRUCTIONS

Prefinished Glue Down Cork with Commercial & Supreme Finish
(Please read all the way through before beginning)

A note about Commercial Finish; This next generation finishing technology offers a very durable and wear resistant finish combined with the ability to apply on-site applications of urethane. A 10 year Residential / 5 Year Commercial Wear Warranty offers confidence even in demanding applications.

Acclimation:

Allow cork tiles to acclimate in shipping cartons in the center of the room where being installed (not against a wall or in a corner. for 72 hours prior to installation. Room temperature should be maintained between 65° and 82°F (18° - 28°C.. Relative humidity should be between 35 and 50%.

Cork flooring is a natural and environmentally responsible product. As such, each tile is different from the next. Color, shade variation and tannin appearance are a part of its natural beauty.

Prior to Installation:

Glue Down Cork Flooring can be installed over dry concrete or wood subfloors, on, above, or below grade. Installation is also suitable over radiant heat. Please consult the document titled `Installing Manufacturer Cork Over Radiant Heat`.

Glue Down Floors with Supreme or Commercial Finish are carefully manufactured to order and prefinished with multiple coats of finish applied at the factory.

The tiles come with one coat of contact adhesive applied to the backs of the tiles and sufficient adhesive to apply to the floor. Contact Adhesive is waterbased and can be cleaned up with water when in a liquid state. When calculating the amount of material you will require, be sure to add at least 10% additional material for cutting if laying square to the room and 10 – 15% additional material when laying on the diagonal (5% is allowed for out of square tiles, or other defects.. Please be certain there is sufficient material to complete installation before beginning.

Tools Required:

*Sharp Utility Knife (with extra blades. *Tape Measure

*Straight Edge

*Chalk Line

*Foam or Short Hair Roller with Handle – not required for Supreme Finish *180 – 220 Grit Sandpaper – not required for Supreme Finish

*Long Pole Drywall Sander – not required for Supreme Finish

*Damp Cloth (for cleanup). Installation Preparation:

Any quarter round and/or baseboard must be removed before proceeding. Doorjambes and casings need to be cut to allow for 0.06" (1mm. clearance of tile).

Subfloor Preparation:

Before installation begins, make sure the subfloor is in good condition and clean. There must be no more than 3/16" (5mm. variation in the surface of the subfloor for every 10' (3m. in any direction. Any bumps must be ground down or sanded away and any depressions must be filled.

It is critically important to perform moisture readings on both the subfloor and ambient humidity prior to outset of installation. Moisture readings are to be documented and left with the end user. In the event of a warranty issue, this information will be required to file a claim.

6149.6149 Stained Cork Tiles

Section III: Installation cont'd.

INSTALLATION INSTRUCTIONS cont'd.

Concrete Subfloor:

New floors must be cured a minimum of 30 days. The subfloor moisture check is to be performed using ASTM F 2170 (Standard Test for Determining Relative Humidity in Concrete Floor Slabs Using In Situ Probes.. Do not install if relative humidity inside concrete slab exceeds 75%. If a new subfloor is required, use Luan Mahogany or Birch plywood. Do not use Fir, poplar, other softwood plywood or chipboard. Moisture content of wood subfloors should not exceed 11% when tested with a non-invasive or pin type moisture meter. Follow NWFA guidelines on wood installation for moisture management. All seams and cracks should be patched using a Portland cement based floor patch. **DO NOT USE GYPSUM BASED FLOOR PATCH.** Allow to thoroughly dry and sand flush with subfloor. Vacuum and wipe with a clean, damp cloth. Subfloor must be free of dirt, grease or spills. If old adhesive is present, it must be scraped off to provide a smooth clean surface.

Planning Layout:

Measure and mark the center point of the north wall in the room and do the same for the south wall opposite. Repeat for the east and west walls. Create a vertical and horizontal line from the center points using a chalk line. When installing a square or rectangular tile, joints should be staggered in a brick / halfstone pattern. For all other patterns, carefully line up tiles at edges using a straight edge to keep them aligned in both directions.

Inspection of Tile:

Before you proceed, inspect goods to make certain product shape, size and color are correct. No claims will be accepted after installation, therefore it is imperative that you inspect before you install. Tiles are inspected prior to shipping for conformity to published technical standards. As cork is a natural product, moisture content and other factors can cause sizing variations during shipping and acclimation. Aronson's does not warrant or accept liability for incorrect installation of product.

Application of Adhesive:

(USE SUPPLIED ADHESIVE ONLY.) Before installation, a coat of adhesive must be applied to the floor. Pour adhesive into a clean paint tray and apply to the floor using the supplied short hair roller. Apply a thin coat to as large an area as can be installed in one day. Adhesive dries quickly (approximately 30 – 60 minutes. When adhesive is transparent and dry to the touch, you can begin installing tiles.

Installation Preparation:

Any quarter round and/or baseboard must be removed before proceeding. Doorjamb and casings need to be cut to allow for 0.06" (1mm. clearance of tile).

Subfloor Preparation:

Before installation begins, make sure the subfloor is in good condition and clean. There must be no more than 3/16" (5mm. variation in the surface of the subfloor for every 10' (3m. in any direction. Any bumps must be ground down or sanded away and any depressions must be filled.

It is critically important to perform moisture readings on both the subfloor and ambient humidity prior to outset of installation. Moisture readings are to be documented and left with the end user. In the event of a warranty issue, this information will be required to file a claim.

6149.6149 Stained Cork Tiles

Section III: Installation cont'd.

INSTALLATION INSTRUCTIONS cont'd.

Installation of Tile:

When installing, select tiles from several packages and shuffle tiles. Tiles are to be checked for any visible defects. Any doubtful tiles should be set aside. Cork floor tile is very pliable and can be easily manipulated, stretched or compressed to ensure tight joints. When installing a pattern with accent chips (such as Lindos.), insert them into the design after tiles are installed on all four sides. Accent chips are purposely cut slightly oversize to create a nice tight fit. Check backs of tiles and remove any dust or debris. This will assure a good bond and prevent any telegraphing to the surface of the tile.

Line up edges of tiles with the guide line and butt joints tightly. Pressure should only be applied once the tile is aligned. Install carefully, once tile has bonded, further movement is not possible. Press each tile along edges. Tiles can be cut easily using a straight edge and utility knife. Change blades often for clean cuts. Leave a 1/8" (3mm. expansion joint around perimeter of room and any pipes or other obstructions. Always install cut tiles with factory edge facing installed tiles.

When you have reached the final row, place the tiles for this row squarely on top of the tiles in the second last row. Using a full tile, mark the width on the planks allowing for the 1/8" (3mm. expansion gap and cut on marks to fill last row. When installation is complete, roll entire floor with a 100 – 150 LBS articulated roller. A laminate roller can be used along the wall and in tight areas.

Applying Urethane:

(USE SUPPLIED URETHANE ONLY. Before application of urethane, shut off or cover any refrigerator or heating vents to prevent air moving over urethane and causing discoloration.

Tiles are coated at the factory with finish and must be sanded with 180 – 220 grit sandpaper on a long pole drywall sander prior to application of urethane. Sanding must be done no more than 12 hours before application of urethane. When sanding, a white dust should be apparent and light scratches should be visible in the factory finish confirming a satisfactory surface for the new coat of finish. Once sanded, clean floor using a canister style vacuum cleaner to remove all grit and dust, then tack with a damp cloth.

Mix urethane thoroughly by stirring containers. If you are using more than one container, mix together in a larger container to ensure even gloss level over the entire floor. If using a commercial Two Component Urethane, follow bottle instructions.

Pour urethane into a clean paint tray and with a foam or short hair roller, apply an even coat of urethane over the entire floor. Do not overwork urethane.

If urethane has been purchased for additional coats, allow to dry (approximately 45 – 60 minutes for single component, 5 – 6 hours for Two Component. and repeat urethane application instructions this time applying at 90° to the first coat.

NOTE: FOR SUPREME INSTALLATION IS THE SAME AS COMMERCIAL BUT NO ADDITIONAL URETHANE CAN BE APPLIED

6149.6149 Stained Cork Tiles

Section IV: Maintenance

MAINTAINANCE GUIDE

Keep floors clean. Sweep or vacuum regularly to remove grit, stones, sand, etc. These abrasive materials can damage both the finish and the cork tile.

For day to day cleaning, Cork floors should be cleaned with only a mist or spray type cleaner suitable for waterbased urethane finish floors. Never use pre-treated dusters or wet-jet type cleaners or hydrogen peroxide as these can damage the finish. Any damage caused by excessive moisture or unsuitable cleaners will not be covered under the warranty. Never wet mop a cork floor.

Clean spills immediately. Do not use abrasive materials or cleaners. Use mats at entrance ways and in high traffic areas such as in front of sinks and stoves. Do not use vinyl back rubber mats which can discolor floors.

Install protectors under chair legs and table legs as well as under heavy furniture. Do not drag furniture or objects across floor. Use chair pads or suitable casters on rolling chairs.

Maintain minimum indoor humidity of 35 – 50% during all seasons.

Protect floors from direct sunlight. Apply a coat of UV protection to windows to minimize fading. Moving furniture and area rugs from time to time can help fading to occur more evenly.

Cork is remarkably resilient and will recover from most indentations and pressure marks over time. In the event the floor becomes gouged or cut, fill sticks are available at most hardware stores and can be used to fill these spots. Significant damage may require replacement of individual tile.

6149.6149 Stained Cork Tiles

Section V: List of Installation Sites

INSTALLATIONS

Educational and Institutional

Hartsville Memorial Library (Library - Darlington County, SC)
Wesmark Branch Library (Library - Sumter County, SC)
Calhoun County Learning Center (Educational - Learning. Calhoun County, SC)
Terry Library (Library - Little Rock, AR)
Dee Brown Library (Library - Little Rock, AR)
Genova Public Library (Library - St. Charles, IL)
Harley Davidson Museum (Museum - Milwaukee, WI)
Live Oak Resource Center (Educational – Learning - Santa Cruz, CA)
ATCO Blue Flame Kitchen (Educational – Learning - Edmonton, AB)
University of Calgary Childcare Development Center (Educational – Learning - Calgary, AB)
Art Institute of Chicago (SAIC. (Educational - Learning. Chicago, IL)
Northeastern Illinois University (Educational - Learning. Chicago, IL)
Highpoint University (Educational – Learning - Highpoint, NC)
Alakanuk School (Educational - Learning.- Anchorage, AK)
San Diego Museum of Art (Museum - San Diego, CA)
Western Springs School District 101 (Educational – Learning - Western Springs, IL)
UNC Chapel Hill (Educational – Learning - Gensler, IL)
Alsip Public Library (Library - Alsip, IL)
Western Kentucky University (Educational – Learning - Bowling Green, KY)
Palo Verde Library (Library - Phoenix, AZ)
Lincoln Land Community College (Educational – Learning - Peoria, IL)
University of Windsor Music Room (Educational – Learning - Windsor, ON)

Office, Retail, Spa and Yoga Studios

Weldon Auditorium (Auditorium - Clarendon County, SC)
Arizona Cardinals Football Stadium (Commercial – Stadium - Glendale, AZ)
Toyota Motor North America Inc (Office – Corporate - New York, NY)
Greenpeace Canada (Office - Toronto, ON)
Toronto Dominion Bank (Office - Corporate) Toronto, ON)
Follet Book Store corporate Offices (Office – Corporate - Western Springs, IL)
Western Energy, (Office – Corporate - Calgary, AB)
Alaskan Crime Lab (Other - Anchorage, AK)
Ford Motor Company (Office – Corporate - Oakville, ON)
Hayward Securi5es (Office – Corporate - Toronto, ON)
The Body Shop (Office – Corporate -Toronto, ON)
Woodland Methodist Church (Other – Church - Woodland, CA)
Marion Cheese Factory & Deli (Retail - Oak Park, IL)
Caterpillar Corporate Headquarters (Office – Corporate - Peoria, IL)
Rothchilds-Berry Meyer Law Firm (Office – Corporate - Chicago, IL)
HOK Architects (Offices – Corporate - Chicago, IL)
Corus Entertainment (Office – Corporate - Toronto, ON)
Xanadu Health Club (Other - Fitness Club - Windsor, ON)
Equinox Westwood Spa (Spa - Los Angeles, CA)
Nestle Canada (Office – Corporate - Mississauga, ON)
St. John's Church (Other – Church - Portsmouth, VA)
The Village at the Mayfair Condominiums (Condominium - Wilmington, NC)