

Truffle, Broadloom Specifications

Revised: 05/01/23

Application:	Commercial / contract installations including institutional, commercial, and public buildings
Fiber:	80% goat hair, 15% nylon, 5% viscose
Colors:	See pages 2-6
Custom colors:	N/A
Width:	6'-7" (2m)
Length:	82'-0" (25m)
Rib direction:	Ribs run across 2m width
Construction:	Fusion bonded
Texture:	Loop
Total weight:	2.75 kg/m ² (81 oz/yd ²)
Total thickness:	1/4" (7 mm)
Flammability:	Cfl-S1
Color fastness:	BS 1006:1990
Primary backing:	Jute
Country of origin:	Ireland
Critical radiant flux tests:	ANSI/ASTM E648 result category 1
Castor chair protectors:	Recommended with 3* colors. Mandatory with 1* and 2* colors
Warranty:	Wear Guarantee and a Lifetime Anti-Ravel/Non-Zipper Guarantee BS EN 1307:2005 Class 33 LC2 Contract Wear
Environmental:	Red List Free and Global Green Tag certified Environmental Product Declaration available upon request
Other product:	Truffle is available in tile in 47 colors

Key:

* Roll goods only

1* Colors best suited to medium/light traffic.

2* Colors best suited to heavy traffic.

3* Colors best suited to extra heavy traffic.

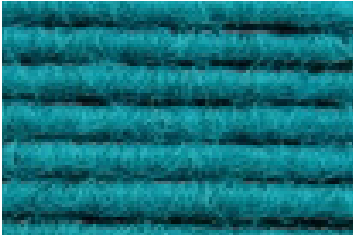
u Undyed wool

ARONSON'S FLOOR COVERING

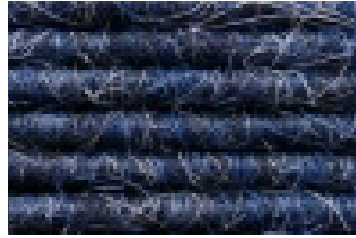
135 West 17th Street New York, NY 10011 T (212) 243 4993 aronsonsfloors.com

Truffle, Broadloom Colors (1 of 5)

Revised: 05/01/23



Aegan 2*



Amethyst 3*



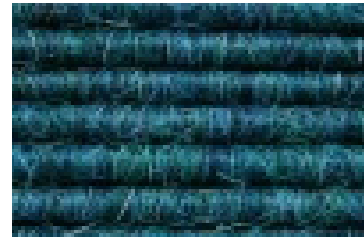
Anthracite 3*



Antique Rose 3*



Apple 2*



Aquamarine 3*



Aubergine 3*



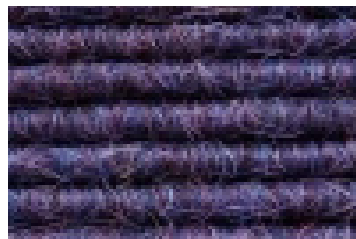
Autumn Fern 3*



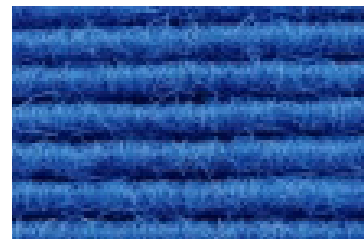
Billberry 2*



Black 3*



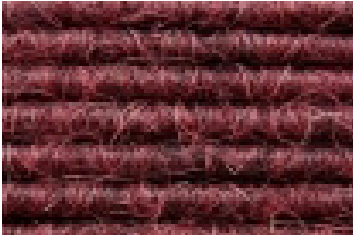
Blackberry 3*



Brilliant Blue 2*

Truffle, Broadloom Colors (2 of 5)

Revised: 05/01/23



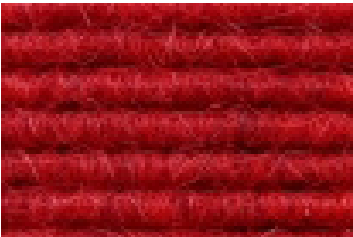
Burgundy 3*



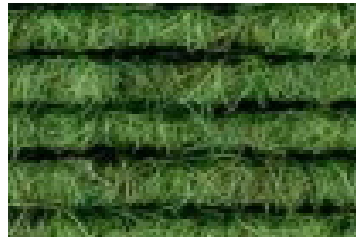
Burnt Orange 2*



Charcoal 3*



Chilli 2*



Clover 3*



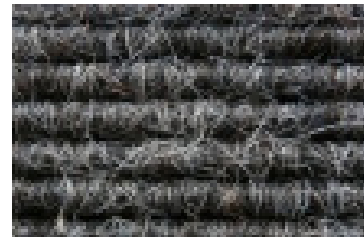
Coffee Bean 3*



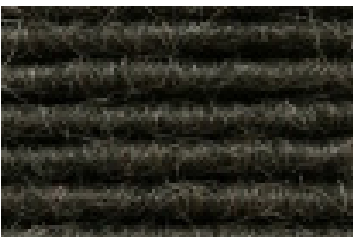
Corn Flower 3*



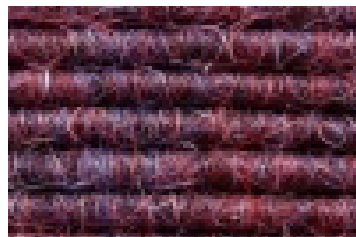
Damson 1*



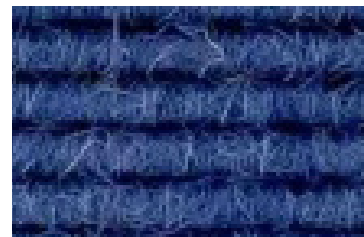
Dapple Grey 3*



Dark Chocolate 3*



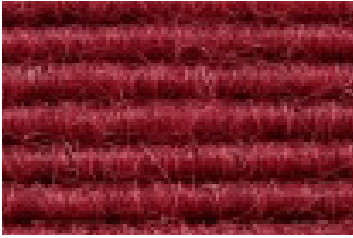
Deep Purple 3*



Denim 3*

Truffle, Broadloom Colors (3 of 5)

Revised: 05/01/23



Diplomared 2*



Double Cream 1*



Dried Lavender 1*



Evergreen 3*



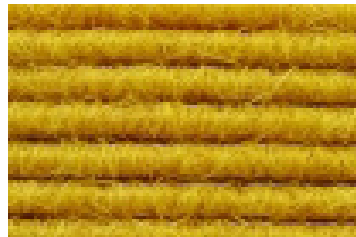
Freshwater 3*



Heather 2*



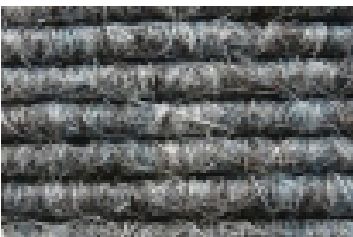
Indigo 3*



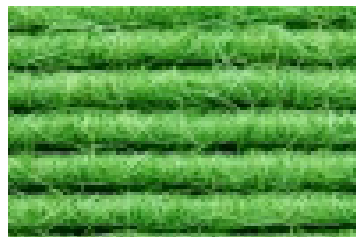
Jonquille 1*



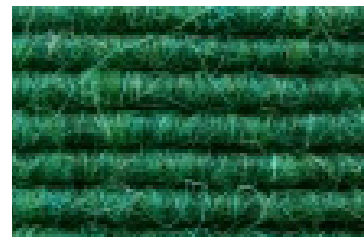
Lagoon Blue 3*



Larch 3*



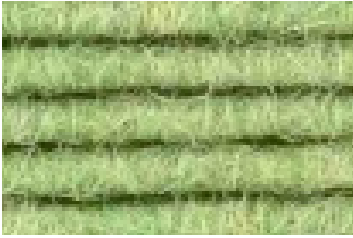
Lettuce Leaf 1*



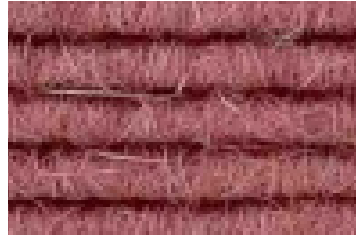
Lichen 3*

Truffle, Broadloom Colors (4 of 5)

Revised: 05/01/23



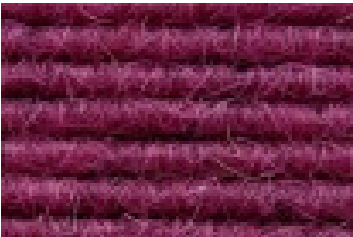
Lime 3*



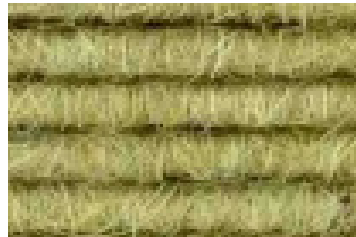
Lipstick 3*



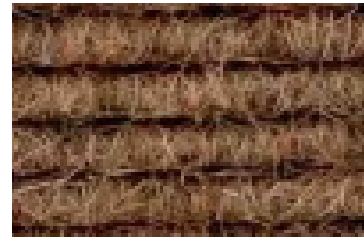
Lovely Lilac 1*



Magenta 2*



Melon 3*



Milk Chocolate 3*



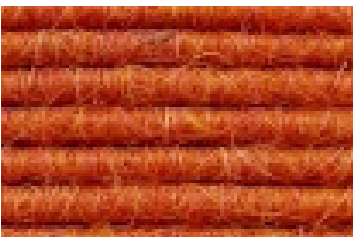
Mushroom 2*



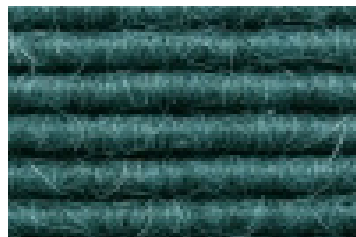
Night Sky 3*



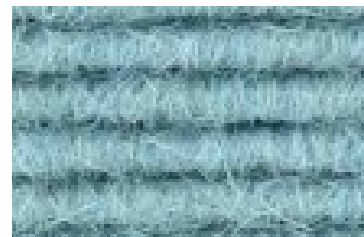
Olive Tang 2*



Orange Squash 1*



Petrol Green 2*



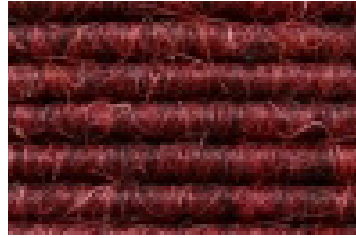
Powder Blue 3*

Truffle, Broadloom Colors (5 of 5)

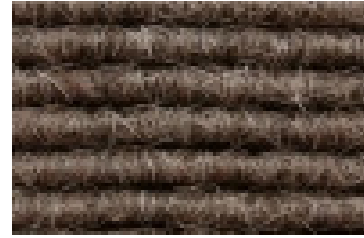
Revised: 05/01/23



Rose Sunset 3*



Russet 3*



Saddle 3*



Sage 2*



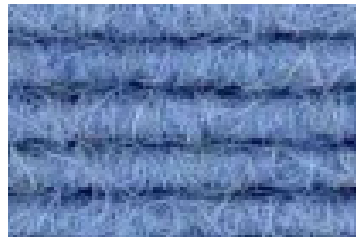
Silver (u) 3*



Silver Birch (u) 2*



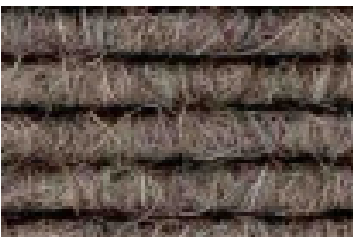
Sisal 2*



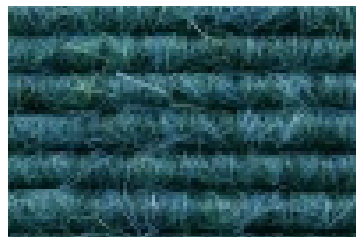
Sky 3*



Taupe 2*



Truffle 3*



Peacock 3*



Wild Rice 2*

Truffle, Broadloom Maintenance

Revised: 05/01/23

- The manufacturer recommends a planned maintenance program using Host® low moisture extraction. A planned maintenance program will ensure maximum appearance retention and performance which must include the use of up-right or canister vacuum cleaners with brush-action power heads.
- Dry vacuuming should be carried out in the direction of the ribs.
- To address spillages and keep the daily appearance of your carpet, use Host® dry carpet cleaner or equivalent. Using this dry cleaning system for spots and spills leaves the carpet uniformly clean – no evidence of spot removal.
- If a spot or spill does not come out with a second or third application of Host®, contact your local professional carpet cleaner today. Quick action may prevent a permanent stain setting.
- Do not use other chemicals which could remain active in your carpet or react with the bonding material that secures the face of the carpet to the backing. The use of inappropriate chemicals may cause permanent damage to the carpet. Be cautious also about using off-the-shelf carpet cleaning detergents. Many can leave a sticky residue in the carpet that will result in premature re-soiling.

Regardless of the system you use, please note the following important points:

1. Always install and maintain adequate barrier/entrance matting.
2. Do not use shampoos and cleaners with a spirit base
3. If spillages occur and you do not have an approved spotting kit to-hand, use these rules:
 - Never rub the carpet.
 - Act quickly.
 - The longer a spill is left unattended, the harder it is to remove the stain.
 - Spillages and cleaning solutions should be blotted up by gently pressing a colourfast towel or similarly absorbent material against the affected area.