

Steel and Brass Studded Rubber Tiles

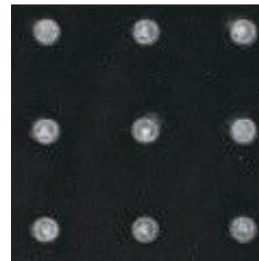
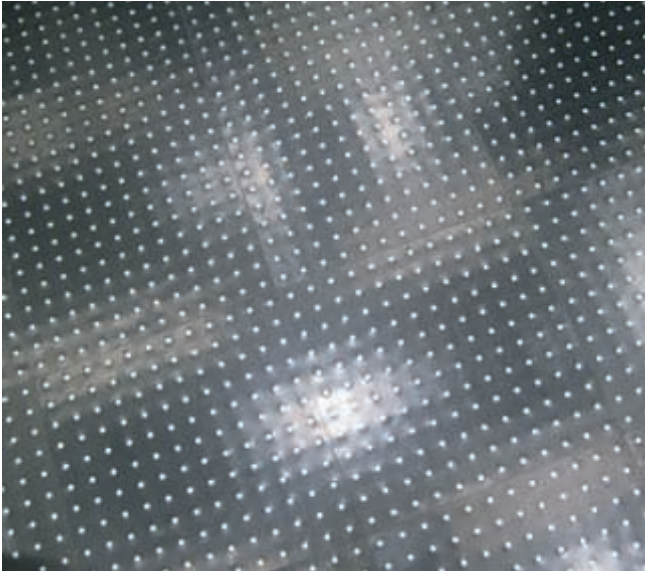
Specifications, Installation, Maintenance

Revised: 08/12/20

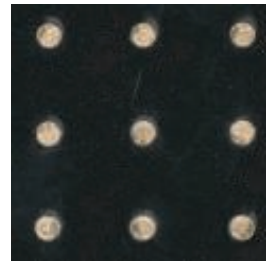
12" x 12" x 1/8 Gauge solid rubber tile reinforced with stainless steel or brass studs, specifically designed for: elevators, entrance ways, and heavy weight bearing areas.

Available with either steel brass studs, smooth (SM) or hammered (SE) finish. Each tile is: 12" x 12" x 1/8", 144 studs.

Studs are inserted through the back of the tile so that the face is a smooth surface combination of stainless steel or brass studs and surrounding material.



Steel



Brass

Smooth (SM)

Gauge: 1/8" (3.175 mm)

Design: Smooth Surface

Size: 12" x 12" (30.48 cm x 30.48 cm),

Hammered (SE)

Gauge: 1/8" (3.175 mm)

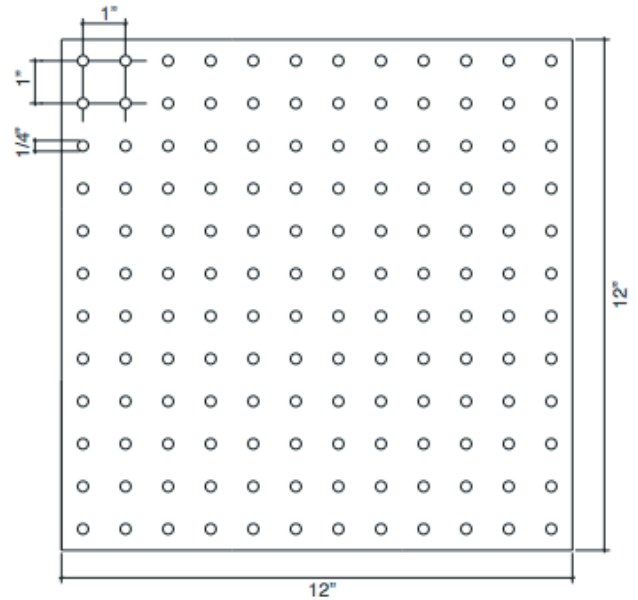
Design: Random Dimples across Surface

Design Depth: 0.010" - 0.015"

Size: 12" x 12" (30.48 cm x 30.48 cm)

Technical Data, Testing:

see next page



Steel and Brass Studded Rubber Tiles Specifications

Revised: 08/12/20

Product Classification

ASTM F 1344, Rubber Floor Tile - Class I, Type A Solid Color

Fire Testing Information

ASTM E 648 (NFPA 253), Critical Radiant Flux - Class 1, > .45 W/cm²

ASTM E 662 (NFPA 258), Smoke Generation - Passes, < 450

General Performance Information

ASTM D2047, Coefficient of Friction (Slip Resistance) - > .6

ASTM D2240, Hardness - > 85

ASTM D3389, Abrasion – Passes <1gm loss

ASTM F925, Resistance to Chemicals – Passes

ASTM F970, Static Load Limit - 250 psi, Passes Max Indentation of 0.003" @ 1,500 psi

Installation:

Important: Be sure your materials are stored on site at a minimum temperature of 65F for at least 24 hours prior to installing.

These procedures are intended to be used for interior installations only. Do not install in areas where grease or oils may be tracked in, including commercial kitchens and bars.

- 1) Remove any old flooring material and clean sub-floor
- 2) Using BR-72, Epoxy lay tiles over concrete or approved subfloor being careful to install with large disc side face down.
- 3) Roll floor with at least 75lb roller.

For ease of cutting tile along walls, remove studs from back of tile near cutting line

Maintenance:

Sweep and wash floor with mild detergent and water dry thoroughly never leave floor wet.

Product Benefits and Limitations:

- Can be installed over radiant heat, operational temperature must not exceed 85° to prevent damage to flooring
- Not to be used in Commercial Kitchens or other areas subjected to animal, vegetable or petroleum based oils and solvents.
- Not to be used in areas subjected to sharp spikes, cleats, sharp wheels, stiletto heels or other objects that could damage the flooring.
- Not to be used in direct contact with heat sources or in outdoor applications.

For product samples contact:

Aronson's Floor Covering (212) 243-4993 or email: info@aronsonsfloors.com