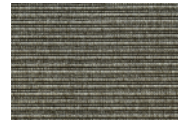


Bentley, Broadloom Specifications

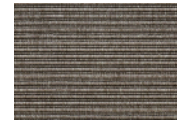


0477004

Application:	Residential & intense commercial
Fiber:	100% polyamid
Colors:	125 colors
Custom colors:	N/A
Width:	13'-2" (4m)
Length:	98'-0" (30m)
Construction:	Woven
Pile weight:	0.785 kg/m ² (23.15 oz/yd ²)
Total weight:	2.4 kg/m ² (70.78 oz/yd ²)
Pile thickness:	1/16" (2 mm)
Total thickness:	5/32" (4 mm)
Flammability:	Cfl-S1
Primary backing:	Pre-coat
Secondary backing:	Textile secondary backing
Country of origin:	Denmark
Castor chair protectors:	Not required
Warranty:	12 months limited warranty
Environmental:	Eurofins Indoor Air Comfort Gold
Testing:	HPD V2.1 LBC Red List Free



0477004



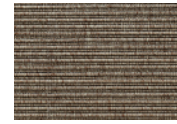
0477011



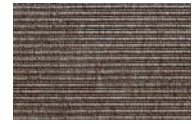
0477012



0477017



0477054



0477056



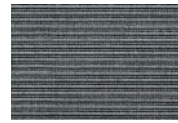
0477091



0477092



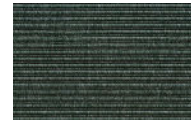
0477094



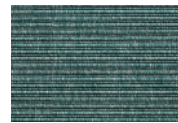
0477142



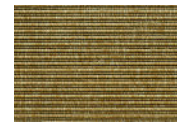
0477151



0477303



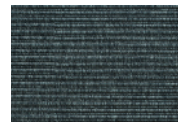
0477305



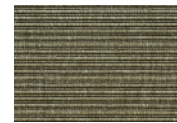
0477331



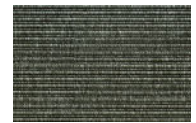
0477351



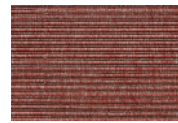
0477355



0477356



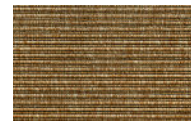
0477362



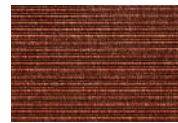
0477450



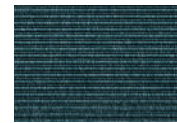
0477590



0477620



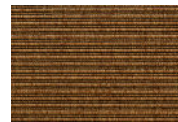
0477825



0477877



0477883



0477887

Bentley, Broadloom Maintenance

- The manufacturer recommends a planned maintenance program using Host® low moisture extraction. A planned maintenance program will ensure maximum appearance retention and performance which must include the use of up-right or canister vacuum cleaners with brush-action power heads.
- Dry vacuuming should be carried out in the direction of the ribs.
- To address spillages and keep the daily appearance of your carpet, use Host® dry carpet cleaner or equivalent. Using this dry cleaning system for spots and spills leaves the carpet uniformly clean – no evidence of spot removal.
- If a spot or spill does not come out with a second or third application of Host®, contact your local professional carpet cleaner today. Quick action may prevent a permanent stain setting.
- Do not use other chemicals which could remain active in your carpet or react with the bonding material that secures the face of the carpet to the backing. The use of inappropriate chemicals may cause permanent damage to the carpet. Be cautious also about using off-the-shelf carpet cleaning detergents. Many can leave a sticky residue in the carpet that will result in premature re-soiling.

Regardless of the system you use, please note the following important points:

1. Always install and maintain adequate barrier/entrance matting.
2. Do not use shampoos and cleaners with a spirit base
3. If spillages occur and you do not have an approved spotting kit to-hand, use these rules:
 - Never rub the carpet.
 - Act quickly.
 - The longer a spill is left unattended, the harder it is to remove the stain.
 - Spillages and cleaning solutions should be blotted up by gently pressing a colourfast towel or similarly absorbent material against the affected area.