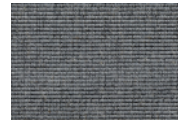


Inverness, Broadloom Specifications



3498013



3498013



3498015



3498028



3498032



3498033



3498034



3498045



3498046



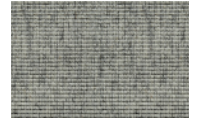
3498047



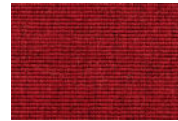
3498056



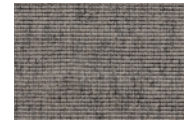
3498057



3498124



3498274



3498534

Application:	Residential & commercial
Fiber:	80% wool & 20% polyamid
Colors:	14 colors
Custom colors:	N/A
Width:	13'-2" (4m)
Length:	98'-0" (30m)
Construction:	Woven
Pile weight:	0.8 kg/m ² (23.59 oz/yd ²)
Total weight:	2.4 kg/m ² (70.78 oz/yd ²)
Pile thickness:	1/16" (2 mm)
Total thickness:	5/32" (4 mm)
Flammability:	Cfl-S1
Primary backing:	Pre-coat
Secondary backing:	Textile secondary backing
Country of origin:	Denmark
Castor chair protectors:	Not required
Warranty:	12 months limited warranty
Environmental:	Eurofins Indoor Air Comfort Gold
Testing:	HPD V2.1 LBC Red List Approved

Inverness, Broadloom Specifications

TECHNICAL SPECIFICATIONS INDIA

Style:	Woven contract bouclé
Fibre:	80/20 Wool/Polyamid, permanently antistatic
Construction:	Tight woven, low-profile contract construction
Width:	4 m
Pile weight:	Ca. 800 g/m ²
Total weight:	Ca. 2,200 g/m ²
Pile height:	ca. 2 mm
Total height:	ca. 4 mm
Number of stitches:	Woven/140.000/m ²
Backing:	Pre-coat + textile secondary backing
Flammability:	Cfl-S1
Static control:	Permanent antistatic
Dyeing process:	CONTINUE
Wearing class:	32
Thermal resistance:	0.07 m ² KW – suitable for floor heating
Impact Sound Insulation:	$\Delta L_w = 17$ dB
Sound Absorption:	$\alpha W = 0,15$
Certificate no:	1021-CPR-012-2/16
Declaration of performance:	<u>Product Group 1C - WO/PA-WT</u>



Bentzon Carpets ApS / Fabrikvej 15 / DK5500 Middelfart / Denmark

T: +45 64 40 20 00 / E: info@bentzon.dk / W: Bentzon.dk / CVR No. 26 02 4€



Inverness, Broadloom Specifications



Certificate

Indoor Air Comfort Gold

Group BC 9

Certified Product

Ege Carpets A/S

Applicant

The above product complies with the Indoor Air Comfort Gold specifications, version 9.0 (2023). These include both inspection of factory production and VOC emissions testing according to EN 16516, at regular intervals. Indoor Air Comfort Gold combines all key European and selected global requirements on VOC product emissions. Additional requirements not related to VOC product emissions, for example content of certain substances or odour are not combined or evaluated. The following VOC emission requirements are combined and the certified product shows compliance with these VOC emission related limit values:

- | | | | |
|--------------------------|----------------------------|--|------------------------------|
| - Belgian VOC regulation | - LEED (ACP) | - Blue Angel DE-UZ 128 | - Nordic Swan |
| - France VOC class A+ | - BREEAM New Construction | - GUT | - Eco Product Norway |
| - Germany (AgBB/ABG) | - WELL Building | - Austrian Ecolabel UZ 35 | - SINTEF (Norway) |
| - Italian CAM Edilizia | - DGNB | - Austrian Baubook | - Cradle to Cradle |
| - EU Taxonomy Regulation | - SKA Rating | - M1 | - very low emitting products |
| | - French HQE certification | - Danish Indoor Climate Label (Emission Class 1) | - according to EN 16798-1 |
| | | - BVB (Sweden) | - Singapore Green Label |
| | | - Miljöbyggnad (Sweden) | - Global GreenTag |
| | | | - Declare 2.0 |

Issue date: 27 November 2023

Product type: Textile Floorings

Validity date: 27 November 2028

Certificate number: IACG-42-03-09-2023

This certificate is valid as specified if regular surveillance and testing is done.

Thomas Neuhaus, Head of Certification Body

eurofins

Product Testing

Inverness, Broadloom Specifications



Appendix to Certificate IACG-42-03-09-2023

Ege Carpets A/S

receives the Indoor Air Comfort Gold certificate with validity 27 November 2028

for below product group, including subgroups and individual products as listed:

Product group: Group BC 9

Product type: Textile Floorings

Products included:

Alfa CF300, Alfa CF400, Alfa CF800, Alfa ECC600, Alfa wt,
Beta CF300, Beta CF400, Beta CF800, Beta Design CF300, Beta Design CF400,
Beta Design CF800, Beta Design wt, Beta ECC600, Beta wt,
Cable ECC600, Cable wt,
Gamma CF300, Gamma CF400, Gamma CF800, Gamma ECC600, Gamma wt,
Golf CF300, Golf CF400, Golf CF800, Golf Tile BC350, Golf wt,
Kappa ECC350,
Kaviar Tile BC350, Kaviar wt,
Omega ECC350,
Randy Tile BC350, Randy wt,
Sigma CF300, Sigma CF400, Sigma CF800,
Sigma ECC600, Sigma Tile BC350, Sigma wt.

The products in this group are based on identical or similar recipe and are produced under equivalent conditions. Grouping of the products and inspection of the production process is part of the Indoor Air Comfort Gold certification. A worst-case product, which is representative for the whole group, is being tested frequently.



Product Testing

Inverness, Broadloom Specifications

India WT by Bentzon Carpets

Health Product Declaration v2.1.1

created via: HPDC Online Builder

CLASSIFICATION: 09 68 20 Carpeting - Broadloom Carpeting

PRODUCT DESCRIPTION: India WT is a collection of carpets in a blend of 80 percent pure new wool and 20 percent polyamide in a low profile rib design. The collection is certified in accordance with European quality standard EN 1307. The carpets are Class 32 certified, making them suitable for use in public areas such as offices, waiting areas and hotel lobbies.

Section 1: Summary

Basic Method / Product Threshold

CONTENT INVENTORY

Inventory Reporting Format

- Nested Materials Method
- Basic Method

Threshold Disclosed Per

- Material
- Product

Threshold level

- 100 ppm
- 1,000 ppm
- Per GHS SDS
- Per OSHA MSDS
- Other

Residuals/Impurities

- Considered
- Partially Considered
- Not Considered

Explanation(s) provided for Residuals/Impurities?
 Yes No

All Substances Above the Threshold Indicated Are:

Characterized Yes Ex/SC Yes No
 % weight and role provided for all substances.

Screened Yes Ex/SC Yes No
 All substances screened using Priority Hazard Lists with results disclosed.

Identified Yes Ex/SC Yes No
 One or more substances not disclosed by Name (Specific or Generic) and Identifier and/ or one or more Special Condition did not follow guidance.

CONTENT IN DESCENDING ORDER OF QUANTITY

Summary of product contents and results from screening individual chemical substances against HPD Priority Hazard Lists and the GreenScreen for Safer Chemicals®. The HPD does not assess whether using or handling this product will expose individuals to its chemical substances or any health risk. Refer to Section 2 for further details.

[MATERIAL](#) | [SUBSTANCE](#) | [RESIDUAL OR IMPURITY](#)
[GREENSCREEN SCORE](#) | [HAZARD TYPE](#)

INDIA WT [80% WOOL / 20 % POLYAMIDE NoGS ALUMINA TRIHYDRATE
 BM-2 | RES DOLOMITE NoGS STYRENE BUTADIENE RUBBER (SBR) LT-
 UNK POLYPROPYLENE LT-UNK POLYETHYLENE TEREPHTHALATE (PET)
 LT-UNK]

Number of Greenscreen BM-4/BM3 contents ... 0
 Contents highest concern GreenScreen
 Benchmark or List translator Score ... LT-UNK
 Nanomaterial ... No

INVENTORY AND SCREENING NOTES:

No screening has been done except automatic screening by Pharos.

VOLATILE ORGANIC COMPOUND (VOC) CONTENT

VOC Content data is not applicable for this product category.

CERTIFICATIONS AND COMPLIANCE See Section 3 for additional listings.

VOC emissions: Eurofins Indoor Air Comfort GOLD - certified product

CONSISTENCY WITH OTHER PROGRAMS

Pre-checked for LEED v4 Material Ingredients, Option 1

Third Party Verified?

- Yes
- No

PREPARER: Self-Prepared

VERIFIER:
 VERIFICATION #:

SCREENING DATE: 2019-05-24

PUBLISHED DATE: 2019-11-18

EXPIRY DATE: 2022-05-24

Inverness, Broadloom Specifications

 **Section 2: Content in Descending Order of Quantity**

This section lists contents in a product based on specific threshold(s) and reports detailed health information including hazards. This HPD uses the inventory method indicated above, which is one of three possible methods:

- Basic Inventory method with Product-level threshold.
- Nested Material Inventory method with Product-level threshold
- Nested Material Inventory method with individual Material-level thresholds

Definitions and requirements for the three inventory methods and requirements for each data field can be found in the HPD Open Standard version 2.1.1, available on the HPDC website at: www.hpd-collaborative.org/hpd-2-1-1-standard

INDIA WT				
PRODUCT THRESHOLD: 1000 ppm		RESIDUALS AND IMPURITIES CONSIDERED: No		
RESIDUALS AND IMPURITIES NOTES: All mentioned residuals and impurities has been uploaded automatically by and from Pharos				
OTHER PRODUCT NOTES:				
80% WOOL / 20 % POLYAMIDE				ID: Not registered
HAZARD SCREENING METHOD: Pharos Chemical and Materials Library		HAZARD SCREENING DATE: 2019-05-24		
%: 34.00 - 36.00	GS: NoGS	RC: None	NANO: No	ROLE: Pile (yarn)
HAZARD TYPE	AGENCY AND LIST TITLES	WARNINGS		
None found		No warnings found on HPD Priority Hazard Lists		
SUBSTANCE NOTES: This yarn is the face fiber.				
ALUMINA TRIHYDRATE				ID: 21645-51-2
HAZARD SCREENING METHOD: Pharos Chemical and Materials Library		HAZARD SCREENING DATE: 2019-05-24		
%: 15.00 - 17.00	GS: BM-2	RC: None	NANO: No	ROLE: Flame retardent
HAZARD TYPE	AGENCY AND LIST TITLES	WARNINGS		
RESPIRATORY	AOEC - Asthmagens	Asthmagen (Rs) - sensitizer-induced		
SUBSTANCE NOTES: Alumina trihydrate is a filler and flame retardent in one product. It is non toxic, non corrosive and environmental friendly.				
DOLOMITE				ID: 16389-88-1
HAZARD SCREENING METHOD: Pharos Chemical and Materials Library		HAZARD SCREENING DATE: 2019-05-24		
%: 15.00 - 17.00	GS: NoGS	RC: None	NANO: No	ROLE: Filling

Inverness, Broadloom Specifications

Section 3: Certifications and Compliance

This section lists applicable certification and standards compliance information for VOC emissions and VOC content. Other types of health or environmental performance testing or certifications completed for the product may be provided.

VOC EMISSIONS

Eurofins Indoor Air Comfort GOLD - certified product

CERTIFYING PARTY: Third Party	ISSUE DATE: 2019-	EXPIRY DATE: 2024-	CERTIFIER OR LAB: Eurofins
APPLICABLE FACILITIES: Bentzon Carpets Aps	10-10	10-10	
CERTIFICATE URL:			

CERTIFICATION AND COMPLIANCE NOTES: Included in Indoor Air Comfort GOLD – Belgian regulation – French regulation – German regulation, AgBB and ABG – E1 classification – EMICODE – GUT – Several EU ecolabel criteria – Several Blue Angel criteria – Several Austrian ecolabel criteria – LEED outside North America – WELL Building – SKA Rating – Italian regulation on GPP (Green Public Procurement) – BVB (Sweden) – FEMB standard for sustainable office furniture – BREEAM International, NOR and NL – M1 – Danish Indoor Climate label – Singapore Green Label – GreenTag Australia

Section 4: Accessories

This section lists related products or materials that the manufacturer requires or recommends for installation (such as adhesives or fasteners), maintenance, cleaning, or operations. For information relating to the contents of these related products, refer to their applicable Health Product Declarations, if available.

No accessories are required for this product.

Section 5: General Notes

India WT is a woven broadloom carpet with pile material of 80% wool and 20 % polyamide. The woven textile backing is made of polypropylene.

Inverness, Broadloom Specifications

Section 6: References

MANUFACTURER INFORMATION

MANUFACTURER: **Bentzon Carpets**

ADDRESS: **Fabriksvej 15**

Middelfart Region Syddanmark 5500, Denmark

WEBSITE: **www.bentzon.dk**

CONTACT NAME: **Ulrich Stenager Heiselberg**

TITLE: **Export Manager**

PHONE: **+45 64 40 20 00**

EMAIL: **ush@bentzon.dk**

KEY

OSHA MSDS Occupational Safety and Health Administration Material Safety Data Sheet

GHS SDS Globally Harmonized System of Classification and Labeling of Chemicals Safety Data Sheet

Hazard Types

AQU Aquatic toxicity

CAN Cancer

DEV Developmental toxicity

END Endocrine activity

EYE Eye irritation/corrosivity

GEN Gene mutation

GLO Global warming

MAM Mammalian/systemic/organ toxicity

MUL Multiple hazards

NEU Neurotoxicity

OZO Ozone depletion

PBT Persistent Bioaccumulative Toxic

PHY Physical Hazard (reactive)

REP Reproductive toxicity

RES Respiratory sensitization

SKI Skin sensitization/irritation/corrosivity

LAN Land Toxicity

NF Not found on Priority Hazard Lists

GreenScreen (GS)

BM-4 Benchmark 4 (prefer-safer chemical)

BM-3 Benchmark 3 (use but still opportunity for improvement)

BM-2 Benchmark 2 (use but search for safer substitutes)

BM-1 Benchmark 1 (avoid - chemical of high concern)

BM-U Benchmark Unspecified (insufficient data to benchmark)

LT-P1 List Translator Possible Benchmark 1

LT-1 List Translator Likely Benchmark 1

LT-UNK List Translator Benchmark Unknown (insufficient information from List Translator lists to benchmark)

NoGS Unknown (no data on List Translator Lists)

Recycled Types

PreC Preconsumer (Post-Industrial)

PostC Postconsumer

Both Both Preconsumer and Postconsumer

Unk Inclusion of recycled content is unknown

None Does not include recycled content

Other Terms

Inventory Methods:

Nested Method / Material Threshold Substances listed within each material per threshold indicated per material

Nested Method / Product Threshold Substances listed within each material per threshold indicated per product

Basic Method / Product Threshold Substances listed individually per threshold indicated per product

Nano Composed of nano scale particles or nanotechnology

Third Party Verified Verification by independent certifier approved by HPDC

Preparer Third party preparer, if not self-prepared by manufacturer

Applicable facilities Manufacturing sites to which testing applies

The Health Product Declaration (HPD) Open Standard provides for the disclosure of product contents and potential associated human and environmental health hazards. Hazard associations are based on the HPD Priority Hazard Lists, the GreenScreen List Translator™, and when available, full GreenScreen® assessments. The HPD Open Standard v2.1 is not:







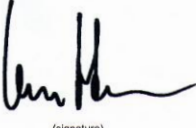
- a method for the assessment of exposure or risk associated with product handling or use,
- a method for assessing potential health impacts of: (i) substances used or created during the manufacturing process or (ii) substances created after the product is delivered for end use.

Information about life cycle, exposure and/or risk assessments performed on the product may be reported by the manufacturer in appropriate Notes sections, and/or, where applicable, in the Certifications section.

The HPD Open Standard was created and is supported by the Health Product Declaration Collaborative (the HPD Collaborative), a customer-led organization composed of stakeholders throughout the building industry that is committed to the continuous improvement of building products through transparency, openness, and innovation throughout the product supply chain.

The product manufacturer and any applicable independent verifier are solely responsible for the accuracy of statements and claims made in this HPD and for compliance with the HPD standard noted.

Inverness, Broadloom Specifications

 DECLARATION OF PERFORMANCE <small>DOP Product Group 1C - WO/PA-WT</small>		
1. Unique identification code of the product-type: Product Group 1C - WO/PA-WT INDIA		
2. Type, batch or serial number or any other element allowing identification of the construction product as required pursuant to Article 11(4): India wt, Macro wt		
3. Intended use or uses of the construction product, in accordance with the applicable harmonised technical specification, as foreseen by the manufacturer: For use as floor covering in buildings (see EN 14041) according to the manufacturer's specifications.		
4. Name, registered trade name or registered trade mark and contact address of the manufacturer as required pursuant to Article 11(5): Bentzon Carpets ApS, Fabrikvej 15, Røjle DK-5500 Middelfart		
5. Where applicable, name and contact address of the authorised representative whose mandate covers the tasks specified in Article 12(2): -		
6. System or systems of assessment and verification of constancy of performance of the construction product as set out in Annex V: System 1		
7. In case of the declaration of performance concerning a construction product covered by a harmonised standard: Name of notified certification body that approved the reaction to fire performance as well as performed the initial inspection of the manufacturing plant and of factory production control, continuous surveillance, assessment and evaluation of factory production control and issued the certificate of constancy of performance. Textile Testing Institute, No. 1021 1021-CPR-012-2/16 Notified Body certificate of constancy of performance		
8. In case of the declaration of performance concerning a construction product for which a European Technical Assessment has been issued: not applicable		
9. Declared performance		
Essential characteristics	Performance	Harmonised technical specification
Reaction to fire		EN 14041: 2004/AC:2006
Content of Pentachlorophenol		EN 14041: 2004/AC:2006
Formaldehyd Emissions		EN 14041: 2004/AC:2006
Slip resistance		EN 14041: 2004/AC:2006
Electrical behavior (dissipative)	NPD	EN 14041: 2004/AC:2006
Electrical behavior (conductive)	NPD	EN 14041: 2004/AC:2006
Electrical behavior (antistatic)		EN 14041: 2004/AC:2006
Thermal conductivity [W/mK]	NPD	EN 14041: 2004/AC:2006
Water-tightness	Not applicable	EN 14041: 2004/AC:2006
10. The performance of the product identified in points 1 and 2 is in conformity with the declared performance in point 9. This declaration of performance is issued under the sole responsibility of the manufacturer identified in point 4 Signed for and on behalf of the manufacturer by: Ulrich Heiselberg, Export Manager  <small>(name and function)</small> <small>(signature)</small> Middelfart, 12.04.24 <small>(place and date of issue)</small>		

Inverness, Broadloom Specifications

INDIA INSTALL
Beta

Bentzon Carpets

Fitting instructions for flatwoven carpets, commercial use: Alfa, Beta, Beta Design, Gamma, Golf, India, Juliett, Lima, Sigma, Randy, Delta

The articles, Alfa, Beta etc., like other flat weave carpets, is not fitted the same way as conventional loop pile and velour carpets. For this reason please observe all the details specified in these fitting recommendations.

The information provided in these fitting instructions is of general nature. Only proper and expert fitting in accordance with the "General Technical Regulations" ATV / VOB Part C DIN 18365 and the latest notice sheets and guidelines ensures proper and expert workmanship.

These fitting recommendations are intended as notes for the experienced fitter and lay no claim to being complete. If the recommendations and processing instructions of the supplier of auxiliary materials, e.g. adhesives and stopper material, differ, the information provided by the manufacturer is always binding. All materials to be used must be designed in such a way that they are suitable for each other and do not have any negative influence on the overall construction and floor covering. It is the responsibility of the planner and the fitter to use products that are suitable for each other or to provide sufficient test areas so as to exclude the possibility of any sources of error.

It is part of the fitter's duty of inspection and care to notify the owner or planner of any objections in writing before starting work.

If our carpet rolls arrive damaged despite their transport packaging, please note this on the haulier's delivery note immediately and accept the goods under reservation if necessary. Only if such notes have been made is it possible to take action against the haulier for the damage.

1. Substrates

The most important types of substrates are: cement screed, anhydrite screed, concrete floors, poured asphalt screed, magnesium oxychloride screed, wooden chipboard, prefabricated floor screeds etc.

1.1 Inspecting the substrates

Before laying textile floor coverings, the contractor (fitter) must inspect the substrate carefully to verify whether the covering can be processed. After inspection, the fitter must submit to the client any objections in writing according to VOB Part B § 4 No. 3.

Some examples:

- o unevenness exceeding the evenness tolerance according to DIN 18202
- o cracks in the substrate
- o closed movement joints
- o insufficiently dry substrate
- o surface of the substrate is too rough and porous
- o surfaces of the substrate are soiled
- o surface of the substrate is insufficiently firm
- o no heating-up report in the case of under floor heating

Bentzon Carpet ApS – Fabrikvej 15 – DK-5500 Middelfart – Tel. +45 64 40 20 00 – Web: www.bentzon.dk

1 of 5

Inverness, Broadloom Specifications

Bentzon Carpets

- o no screed markings for measuring moisture
- o adjacent components at an incorrect height
- o unsuitable temperatures of the substrate and climatic conditions. The temperature, when installing the carpet, must be between 17° and 25° celsius, at a relative humidity of 35-75 % RF. %. These atmospheric conditions in the room must be maintained 3 days before and at least 7 days after fitting, day and night.
- o edge insulating strip does not project
- o etc.

Attention!

Non-observance of the substrate inspection may lead to damage during or after fitting.

1.2 Moisture check

With the exception of asphalt constructions, substrates evidence household moisture. As soon as these key values are exceeded, i.e. the substrates are still too damp, the increased moisture present at the time of fitting can have a harmful effect in the period thereafter. For this reason, the substrate must be inspected before fitting by means of a suitable moisture measurement process, e.g. the CM method. The respective values must be checked against the state of the art. In the case of under floor heating, the owner must present a heating-up and cooling-down report according to the cutting point coordination. In addition, the floor layer must carry out a moisture check at marked places (without heating pipes). During and after fitting, the floor temperature must be approx. ± 22 °C.

1.3 Primers and stoppers

Substrates with which stoppers will not bond permanently must be primed with suitable primers, e.g. very thick, very smooth or very porous and highly absorbent substrates. A primer is always required in the case of anhydrite and magnesium oxychloride screeds.

2. Fitting on old substrates

Substrates to which a wearing covering had already been glued in the past must be freed from adhesive residues and other soiling so that a firm, smooth surface is created. It must then be primed and stopped with absorbent stopper. Please refer to the processing guidelines of the stopper manufacturer for the suitable stopper, the thickness of the application and the water-cement factor. It is recommended to use materials from one manufacturer which are co-ordinated.

3. Processing the carpet

Before being cut to size, the carpet supplied must be inspected for faultlessness, its colour and all other identifiable defects. The general and usual production-related tolerances (e.g. colour of a batch according to grey scale \geq level 3) should not be reported in this inspection. Any defects must be notified to Bentzon Carpets immediately before individual runs are cut. Visible defects might no longer be accepted once the carpet has been cut or fitted.

3.1 Processing several rolls

When fitting several rolls, ensure that the roll labels and the production or batch number on each roll match. If no cutting plan is provided, begin with the smallest roll number and work to the largest roll number. If a cutting plan is provided by the factory, this takes precedence. Each roll must be fitted in the specified order so as to avoid colour deviations at the seams.

Bentzon Carpet ApS – Fabrikvej 15 – DK-5500 Middelfart – Tel. +45 64 40 20 00 – Web: www.bentzon.dk

2 of 5

Inverness, Broadloom Specifications

Bentzon Carpets

3.2 Conditioning

In order to ensure perfect fitting, the textile floor coverings and the adhesive to be used must be conditioned for about 48 hours before processing. Ensure a floor temperature of at least + 15 °C and a room temperature of at least + 18 °C at a relative air humidity of no more than 65 %.

3.3 Laying out the carpet lengths

In the absence of any specific arrangements, the division of the runs and the direction of fitting of the individual runs are left to the fitter. However, the direction in which carpet runs are fitted must not change within one spatial unit. To avoid any discrepancies later on, it is advisable to co-ordinate the direction of fitting with the site engineer or the owner before fitting. We recommend fitting the carpet in all rooms or levels in one direction only, due to the clearly visible texture of the Alfa, Beta etc. carpet.

3.4 Trimming at columns and pillars

Insofar as the room contains columns, pillars and similar, the cut for the respective carpet run must always be made lengthwise. Crosswise cuts sever all pile yarns, which has a permanent negative visual impact.

3.5 Trimming run edges of flatwoven

We recommend cutting the run edges separately. Cut approx. 2 – 3 cm precisely and in parallel from the roughly pre-cut edges on the right and left hand side of the length of carpet. Place a roll-up steel straightedge (8 cm wide) precisely along the edge of the strip. For longer carpet runs, we recommend cutting the run edges by overlapping them and double cutting the seam. Once the two carpet runs are precisely overlapped, place a long, sturdy roll-up steel straightedge along the edge to be cut. Here, it is essential that the upper carpet run falls entirely within the overlap area. Double cut the seam with a sharp seam cutter (Stanley knife) along the roll-up steel straightedge. If the initial cut did not completely sever the lower carpet run, cut again along the same line prior to moving the roll-up steel straightedge. Insofar as all the pile-binding fibres are severed, it is possible to cut the textile backing with a sharp hooked blade. Never make the seam cut using only a hooked blade. This could result in fibre filaments being pulled out of the binding. Due to the manufacturing method, always avoid creating head seams on all carpets made of flat-woven fabric. However, if this is unavoidable (e.g. doorways etc.) cut precisely in the area of the lower lying rib or after the binding of the basic fabric as described above.

Beta Design

Due to the design-forming weave the seam cut must never be made in the pattern area. If the pattern-forming areas are cut inadvertently, this may lead to optically dominating pattern formations.

3.6. Folding back and gluing the individual seams

We recommend folding back the carpet along the seams, e.g. to allow each seam to be laid precisely in position (press) and glued. Please take care not to displace the individual lengths.

4. Gluing individual runs

A full-surface gluing is recommended. The appropriate adhesive must be chosen according to the back of the carpet, the substrate and the required purpose. Always ensure that high-class "very low emission adhesives", e.g. of class EC 1, which comply with all legal requirements, are used, such as

Bentzon Carpet ApS – Fabrikvej 15 – DK-5500 Middelfart – Tel. +45 64 40 20 00 – Web: www.bentzon.dk

3 of 5

Inverness, Broadloom Specifications

Bentzon Carpets

Mapei Ultrabond Eco 170, Mapei Ultrabond Eco V4 SP, Henkel Thomsit T 410 or Bostik Power Tex.

4.1 Applying the adhesive

The quantity of adhesive will depend on the properties of the substrate, the specific weight of the adhesive and the back quality of the floor covering (roughness). For compact felt backing \geq CF400 backing, it is required to use B2 tooting for applying the adhesive. The adhesive is applied over the full surface by means of a notched spatula. The form of notching is specified by the adhesive manufacturer. When applying the adhesive, make sure that no adhesive accumulates in the indents of the substrate. Depending on the type of adhesive, the carpet can be placed in the adhesive base after application and once the airing time has elapsed (the excess water in the adhesive must escape into the air). Always ensure sufficient glue on the rear of the floor covering. The entire surface of the carpets must be rubbed down after being placed in the adhesive base. Depending on the room conditions, it may be necessary to rub down or roll the entire surface again after about 30 - 45 minutes. Final inspection and any further rubbing down/rolling must take place after approx. 60 minutes.

To avoid indentations, slipping out of position of the pattern and damage of seam edgings, a setting of the glue of at least 24 hours has to be observed. During this period the freshly fitted areas must not be weighted with additional construction work or with furniture, etc.

Attention! If additional construction work is carried out after fitting, the wall-to-wall carpet must be sufficiently protected from construction soilings, etc. The protection covers should only be applied after setting and once the glue is thoroughly dry. Please be sure that the protection cover is breathable and leaves no glue residues.

5. Fitting recommendations for conductive carpetings

The last few years have seen an increasing number of conductive carpetings being laid without any special conductive fitting. However, we recommend that conductive fitting is carried out as follows.

The substrate to be covered must be inspected and prepared as described above. The entire surface of the fully stopped substrate is primed with a conductive primer after it has dried out.

When this primer has dried, a copper band flag (10 x 0.08 mm) is glued on every 30 m² or every 7 m of axis length in the area of the intended earthing point with conductive adhesive. The copper band flag should reach about 1 m into the room and be of sufficient length at the earthing point. Attention: connection should always be executed by an electrician. Further fitting is carried out according to the type of manufacture or pattern of the carpet as described in these recommendations. When carpet runs are glued, of course, a sufficient quantity of conductive adhesive (EC 1) must be used.

6. Seam edge fixing

In the case of highly used areas and revision openings, round cuts and seams, etc. a permanent seam edge fixing is necessary. According to DIN 18365 (characteristic properties) this has to be made properly and professionally with a transparent glue. Smearing at the pile of the carpeting has to be avoided.

Bentzon Carpet ApS – Fabrikvej 15 – DK-5500 Middelfart – Tel. +45 64 40 20 00 – Web: www.bentzon.dk

4 of 5

Inverness, Broadloom Specifications

Bentzon Carpets

7. Stairways

The suitability for stairs must be ensured already when buying the carpet. The corresponding quality must be chosen according to the expected wear and tear, taking into account the anticipated frequentation. If necessary, a special stair rail (nosing) must be fitted on the edge of the riser. When determining the quantity required, always make sure that the pile direction goes downstairs. The radius of the nosings must be rounded off at least 10 mm.

Because of the large variety of different materials and stair versions, we cannot go into detail here about preparation of the substrate.

The carpet must be matched roughly to the individual steps, i.e. there should be a projection of at least 1 – 2 cm all round. Gluing to the step can be done using a suitable dispersion adhesive of class EC 1. If the carpet has to be led around the nosing, however, dispersion contact adhesive is indispensable in certain cases. The dispersion adhesive is applied to the step in sufficient quantity by means of a notched spatula. After the airing time has elapsed, the floor covering must be laid and then trimmed to the exact dimensions according to the stair contours once the adhesive has set.

If contact adhesives (dispersion-based) are used, the dispersion contact adhesive must be applied in sufficient quantity to both the step itself and the back of the carpet. After the airing time or after the two adhesive surfaces have dried, the carpet is laid and rubbed down. Only then is the carpet adjusted according to the stair contours.

8. Cleaning

After fitting, you are obliged to verifiably hand over cleaning and care instructions. Please refer to our current cleaning and maintenance recommendations.

9. Special advice

9.1 Chair castor suitability

Office chairs must have suitable castors for the use of the respective floor covering. DIN EN 12529 distinguishes between two types. On textile floor coverings, only the use of castors of type H (for hard) is to be envisaged. If unsuitable castors are used, increased signs of wear can be expected. The technical information we provide is limited solely to the suitable chair castor according to the above-mentioned standard.

9.2 Limitation of the fitting recommendations

The information provided in these fitting instructions can only be of general nature.

Recourse claims in this respect are excluded.

In case of doubt, we recommend that you perform your own tests and carry out test or trial fittings.

Inverness, Broadloom Specifications

Bentzon Carpets

1/3

cleaning

Adresse: Bentzon Carpets ApS
Fabrikvej, Røjle
DK-5500 Middelfart
Danmark
CVR-nr.: 26 02 46 33
Telefon: +45 64 40 20 00
Telefax: +45 64 40 24 24
e-mail: info@bentzon.dk
www.bentzon.dk

Cleaning recommendation for the articles Alfa, Beta, Beta Design, Gamma, Golf, India and Juliett, Kappa and Omega

Congratulations on the purchase of your new carpet Alfa/Beta/Golf/Beta Design!
This cleaning recommendation is intended as an explanation and makes no claim to be exhaustive. We also kindly ask you to pre-test your cleaning agent on an unobtrusive area of the carpet or spare piece of carpet.
Regular cleaning of Alfa/Beta/Golf/Beta Design is not only important from an aesthetic and hygienic point of view but also contributes considerably towards preserving the value of the carpet.

We recommend fitting a barrier carpet in entrance areas. These barrier carpet zones absorb the dirt taken into the entrance area. The advantage of this is that the dirt does not have to be removed from large areas. Barrier carpets are particularly absorbent so that they can hold a large amount of moisture and dirt.

Daily vacuuming with a brush-type vacuum cleaner
Daily removal of the loose and slightly adhesive dirt is particularly important for commercially used carpets. A powerful brush-type vacuum cleaner from e. g. Kärcher type CW 36/2 and CW 46/2 or CW 100 / Nilfisk type GU 350 will remove and vacuum up the dirt due to the mechanical action of the powered brush rollers. Highly adhesive dirt such as e. g. heel abrasion cannot normally be removed by vacuuming with a brush-type vacuum cleaner. Please proceed as described under "heel abrasion".

It is important not to try to remove moist dirt with the brush-type vacuum cleaner as its brush rollers will spread the dirt even further.

Stain and spot remover

Alfa / Beta is manufactured from high quality fibres. Due to the position of the individual fibres dirt may work its way between the yarns. For this reason we recommend removing dirt and stains as described in the following:

Scoop up the stain solids immediately using a blunt object or spoon. Subsequently soak up the liquid stain with absorbent material such as kitchen wipe or cellulose. If residual particles are still embedded in the structure of the carpet, use lukewarm water and a clean cloth. Wipe with the damp cloth, working from the edges of the stain towards the centre to avoid spreading the substance causing the stain.

Bankforbindelser:
Danske Bank
Middelfart
konto 3420-3420 788 762
SWIFT: DABADKKKIMID

Danske Bank
Hamburg
konto 4989020021
BLZ: 203 205 00

Danske Bank
London
konto 4893655838
CS: 30 12 81

Rabobank
Holland
konto 3261.77.342

Inverness, Broadloom Specifications

Bentzon Carpets

Adresse: Bentzon Carpets ApS
Fabrikvej, Røjle
DK-5500 Middelfart
Danmark
CVR-nr.: 26 02 46 33
Telefon: +45 64 40 20 00
Telefax: +45 64 40 24 24
e-mail: info@bentzon.dk
www.bentzon.dk

2/3

After removing the dirt, wring out the cloth and try to remove as much of the remaining moisture as possible. If the area is to be dried as fast as possible, use a hairdryer at a low temperature setting.

Heel abrasion

Due to the position of the very resistant fibres it is possible, as a result of the turning, stopping and rubbing movements of very soft rubber shoes, in particular, for rubber abrasion to stick and become so firmly embedded in the fibre material that it cannot be removed by vacuuming with a brush-type vacuum cleaner alone. If this is limited to individual areas the spot can be slightly moistened with a stain removal agent containing solvent and rubbed with a soft brush or non-staining towel. This will dissolve the dirt which can then be removed with the towel. If the stains cover a larger area follow the procedure described under "pad cleaning".

Intermediate cleaning

In the course of time, in spite of intensive care and cleaning, tracking (surface soiling) will occur in areas of high traffic. As it is not normally economical to clean the entire carpet, you may clean as follows:

Pad cleaning

For this method special cotton looped fabric pads or microfibre pads are laid underneath single or triple-disk machines. In addition a solution of e. g. TANA – Karacho in the ratio of 1:10 is applied to the stained areas using pump dispensers and subsequently cleaned with the cleaning pad. The rotating pads take up the dissolved dirt. As the pads can only absorb a limited amount of dirt, ensure that they are changed frequently, otherwise the dirt will be spread evenly over the surface and there will be no cleaning effect. Therefore, check before cleaning that there are sufficient pads available.

As this cleaning technique requires special machines and pads, it should only be performed by a professional cleaner.

Full cleaning

If in the course of time the carpet becomes soiled over a large area or by a large number of stains, heel abrasion etc., we recommend full cleaning of the carpet. Before cleaning vacuum the carpet thoroughly with a brush-type vacuum cleaner. Check that the carpet is properly glued down before cleaning, otherwise damage may occur in the form of shrinkage.

Shampooing

Only use crystalline drying carpet shampoos such as e. g. TANA TR 12. Dilute according to the manufacturer's instructions and work into the fibre material using a single or multi-disk machine such as e. g. Kärcher type Disk D 1000S / Nilfisk type BRM 421A with a soft shampooing brush. The shampoo solution absorbs and binds the dirt.

Bankforbindelser:
Danske Bank
Middelfart
konto 3420-3420 788 762
SWIFT: DABADKKMID

Danske Bank
Hamburg
konto 4989020021
BLZ: 203 205 00

Danske Bank
London
konto 4893655838
CS: 30 12 81

Rabobank
Holland
konto 3261.77.342

Inverness, Broadloom Specifications

Bentzon Carpets

3/3

Adresse: Bentzon Carpets ApS
Fabrikvej, Røjle
DK-5500 Middelfart
Danmark
CVR-nr.: 26 02 46 33
Telefon: +45 64 40 20 00
Telefax: +45 64 40 24 24
e-mail: info@bentzon.dk
www.bentzon.dk

For this reason the shampoo has to be vacuumed up as soon as it has been worked in using a water extraction machine e. g. Kärcher type NT 551 / Nilfisk type IW 1040. Do not let the soiled foam dry onto the carpet. Also ensure that the carpet is not walked on while it is damp. We also recommend removing the excess shampoo with a spray extraction unit. The special spray extraction agents e. g. Sprüh-Ex are diluted and poured into the clean water container of the spray extraction unit e. g. Kärcher type Puzzi professional series / Nilfisk type AX 300 according to the manufacturers instructions. In these spray extraction units the cleaning solution is conveyed through a hose line to the spray / suction nozzle, sprayed at a uniform pressure onto the carpet and simultaneously extracted. The dissolved dirt and excess water is conveyed to the dirty water container via a second hose. This rinsing process removes the deep-seated dirt from the bottom of the carpet. To avoid stripes clean small overlapping areas. We recommend rinsing the entire area in a second operation with clear water. This second rinse achieves a more uniform cleaning result and reduces the residual moisture of the carpet.

Combination method

For extremely dirty carpets we recommend the combination of shampooing and spray extraction. The mechanics of the shampooing and subsequent rinsing by way of the spray extraction process with clear water thoroughly cleans very dirty carpets. Before cleaning with liquids always check that the carpet is properly glued down to avoid damage.

Take care with hot objects. The fibre material may melt if it is near a fireplace or comes into contact with cigarette ash. Such burnt spots are subsequently irreparable.

As there a large number of cleaning agents on the market, we would like to point out that pH neutral, non film forming cleaning agents should be used as far as possible. In addition, ensure that cleaning agents are completely removed from the fibres, otherwise they will cause increased soiling and discoloration.

The information contained in these instructions is the result of extensive testing and is in line with the generally accepted rules of the trade. As there are so many factors to consider, we hope that you will understand that no claims for compensation may be made on the basis of this recommendation.

Attention!

If additional building work is to take place after Alfa/Beta/Golf/Beta Design has been fitted, protect the article from soiling.

Alfa/Beta/Golf/Beta Design is easily damaged by the mechanical effect of sharp-edged, heavy objects.

Therefore, do not, for example, push furniture over the carpet as this will cause irreparable damage.

Bankforbindelser:
Danske Bank
Middelfart
konto 3420-3420 788 762
SWIFT: DABADKKMID

Danske Bank
Hamburg
konto 4989020021
BLZ: 203 205 00

Danske Bank
London
konto 4893655838
CS: 30 12 81

Rabobank
Holland
konto 3281.77.342

Inverness, Broadloom Maintenances

- The manufacturer recommends a planned maintenance program using Host® low moisture extraction. A planned maintenance program will ensure maximum appearance retention and performance which must include the use of up-right or canister vacuum cleaners with brush-action power heads.
- Dry vacuuming should be carried out in the direction of the ribs.
- To address spillages and keep the daily appearance of your carpet, use Host® dry carpet cleaner or equivalent. Using this dry cleaning system for spots and spills leaves the carpet uniformly clean – no evidence of spot removal.
- If a spot or spill does not come out with a second or third application of Host®, contact your local professional carpet cleaner today. Quick action may prevent a permanent stain setting.
- Do not use other chemicals which could remain active in your carpet or react with the bonding material that secures the face of the carpet to the backing. The use of inappropriate chemicals may cause permanent damage to the carpet. Be cautious also about using off-the-shelf carpet cleaning detergents. Many can leave a sticky residue in the carpet that will result in premature re-soiling.

Regardless of the system you use, please note the following important points:

1. Always install and maintain adequate barrier/entrance matting.
2. Do not use shampoos and cleaners with a spirit base
3. If spillages occur and you do not have an approved spotting kit to-hand, use these rules:
 - Never rub the carpet.
 - Act quickly.
 - The longer a spill is left unattended, the harder it is to remove the stain.
 - Spillages and cleaning solutions should be blotted up by gently pressing a colourfast towel or similarly absorbent material against the affected area.