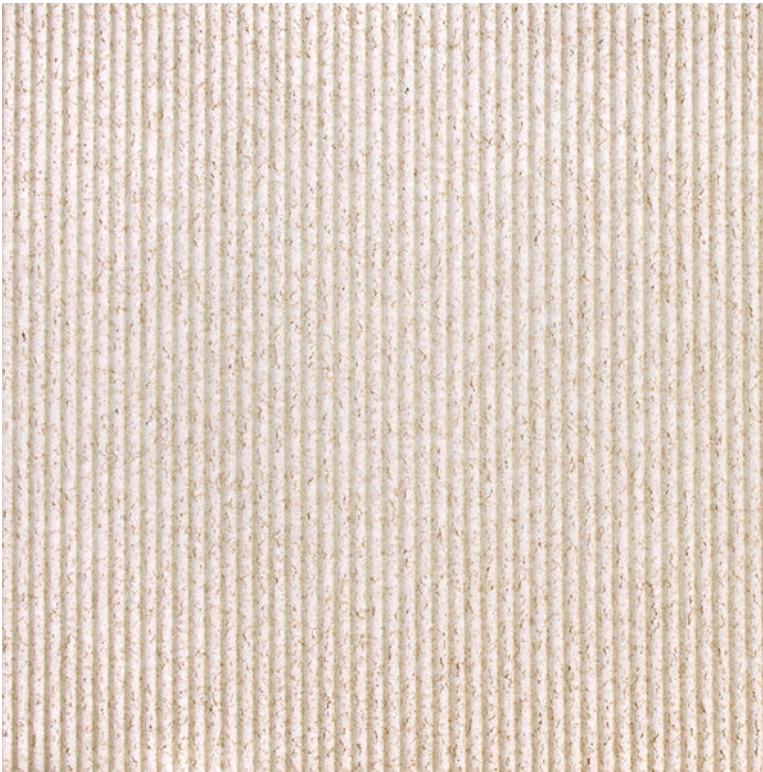


Wall Cork Tiles 1 Specifications



Aria



Aria



Domenica



Donna



Francesca



Marisa



Princella



Serena

Application:	Residential & Commercial
Fiber:	Cork tile
Colors:	6 colors
Tile size:	12" x 24" (305 x 610 mm)
Thickness:	5/32" (4 mm)
Finish:	Commericla grade water-based finish
Flammability	Fire Test ASTM - E84 Class C
Warranty:	Refer to Conditions of Contract for project warranty provisions
Environmental:	Greenguard gold certified Declare Label Red List Free Mindful MATERIALS
Misc:	Ask us about FSC ® Certified Cork

Wall Cork Tiles 1 Maintenance

- Ensure that adhesive has cured for recommended period of time prior to conducting initial maintenance. Remove any protective coverings prior to cleaning. Use a microfiber towel or rag to remove any dirt, dust or debris.
- If necessary, the material can be cleaned with a neutral cleaner. Using an unused or thoroughly cleaned spray bottle, mix the Hilway Direct Neutral Cleaner per with warm, clean potable water at a ratio of 1:5 (cleaner:water). Spray the cleaning solution onto a new, clean towel, sponge or rag and carefully wipe the affected area to remove dirt, debris or build-up.
- For more stubborn discoloration, you can spray the material directly. Spray the cleaning solution onto the surface of the material and let stand for 5 minutes. Use a 3M White Utility/Scouring pad, soft-bristled scrub brush or sponge (with pole attachment, if necessary) to lightly scrub the surface of the material to remove discoloration on the surface. Use a clean towel or rag to remove excess cleaning solution.
- When spraying directly onto the material, the material must be rinsed. Use a second, unused or thoroughly cleaned spray bottle with clean, cool potable water to rinse area. Wipe with a clean towel or rag to remove all excess water.
- Ensure that initial maintenance and finish application (if necessary) has been conducted prior to conducting daily maintenance. Sweep or dust mop and vacuum flooring to remove any dirt, dust or debris. Do not use vacuums that have a beater bar or electric brooms with hard plastic bottoms or no padding, as this may cause discoloration, scratching and loss of sheen. When using a mop, use a two bucket system for cleaning - one bucket with cleaning solutions and another bucket with clean, potable water for rinsing.

Ensure flooring area is clean and that all cleaning residue has been removed.