

PureCork

Colorways



Star



Star



Stucco



Pumice



Bisque



Driftwood



Terra



Honey



American Walnut



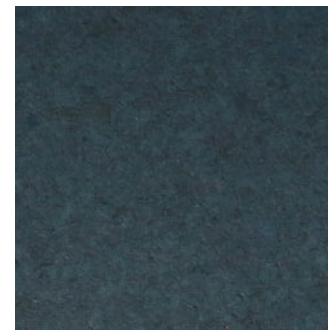
Fog



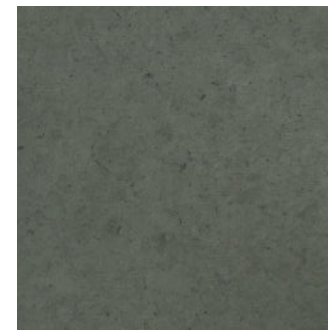
Otter



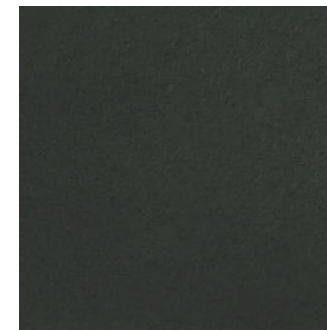
Burgundy



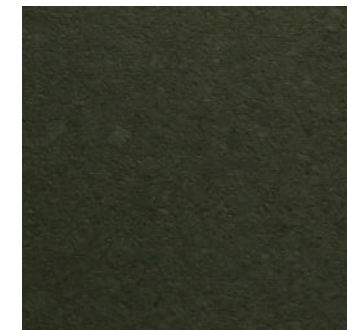
Ink



Balsa



Slate



Pine

Tile Info / Sizes

Material: Cork

Finish: Oil, raw matte appearance

Thickness: 8mm (5/16" nom.)

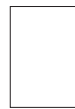
Use: Residential, indoor use only

Sizes: All sizes are nominal

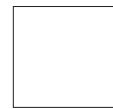
Cork is a natural wood product; variations in color, therefore, occur naturally.



3" x 6" nom.
7.5 x 15 cm nom.



4" x 6" nom.
10 x 15 cm nom.



6" x 6" nom.
15 x 15 cm nom.



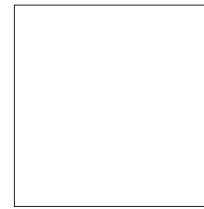
3" x 12" nom.
7.5 x 30 cm nom.



4" x 12" nom.
10 x 30 cm nom.



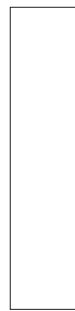
6" x 12" nom.
15 x 30 cm nom.



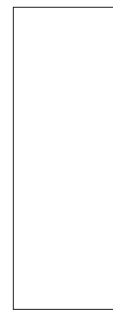
12" x 12" nom.
30 x 30 cm nom.



3" x 18" nom.
7.5 x 45 cm nom.



4" x 18" nom.
10 x 45 cm nom.



6" x 18" nom.
15 x 45 cm nom.



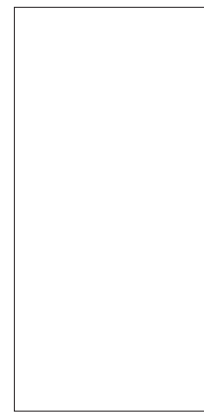
3" x 24" nom.
7.5 x 60 cm nom.



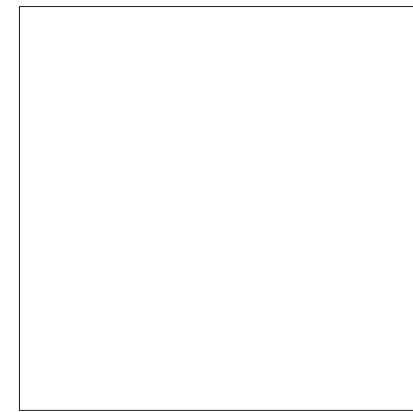
4" x 24" nom.
10 x 60 cm nom.



6" x 24" nom.
15 x 60 cm nom.



12" x 24" nom.
30 x 60 cm nom.



24" x 24" nom.
60 x 60 cm nom.

Patterns

Cork is a natural wood product; variations in color, therefore, occur naturally.



Amur



Lamella



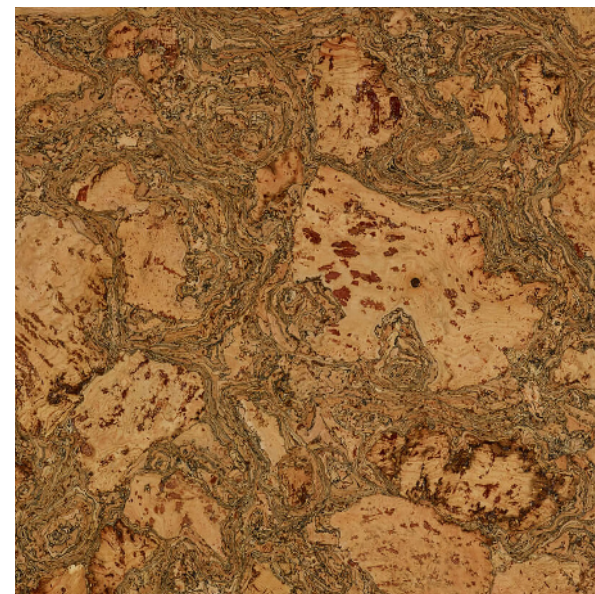
Lignin



Rue

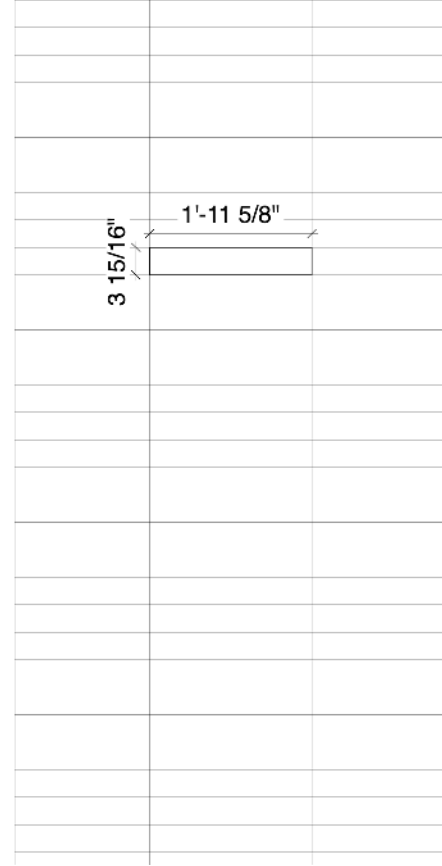


Drupes





Lignin Black



Horizontal Stripe



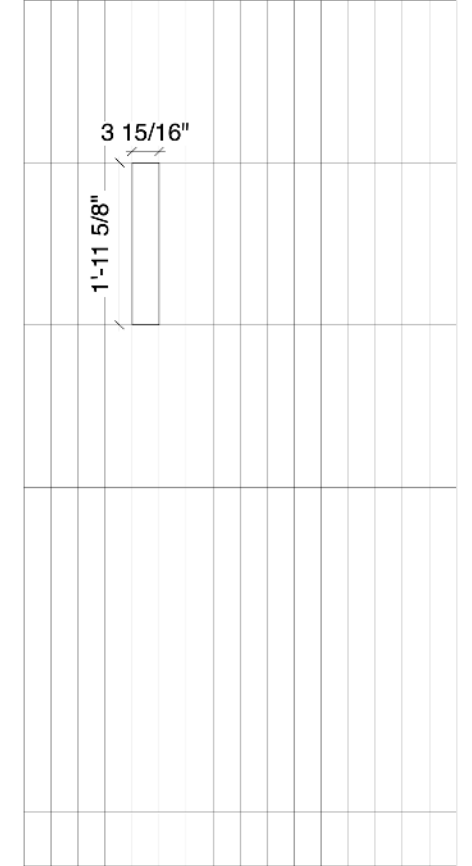
A

-  Star
-  Bisque

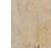

B

-  Terra
-  American Walnut


Vertical Stripe



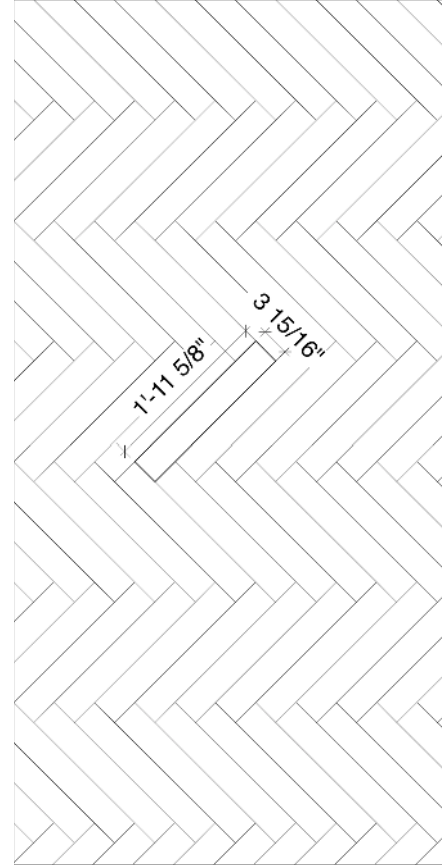
C

-  Star
-  Stucco

D

-  Pumice
-  Slate

Herringbone 1



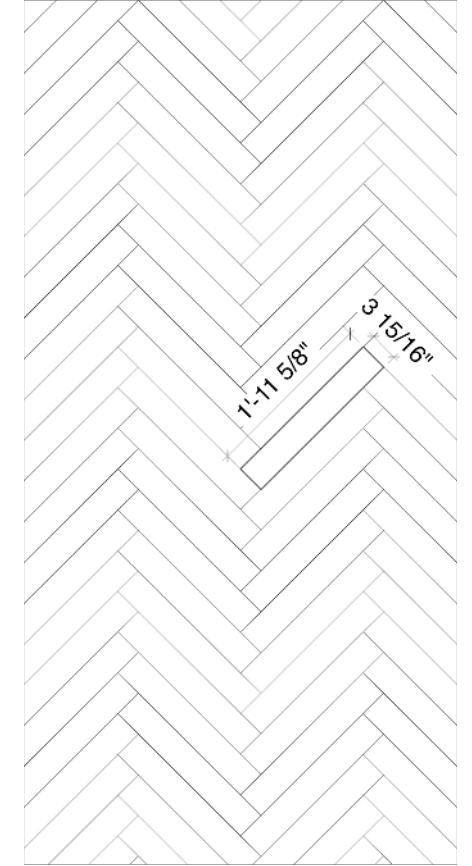
A

- Stucco
- Star

B

- Stucco
- Balsa

Herringbone 2



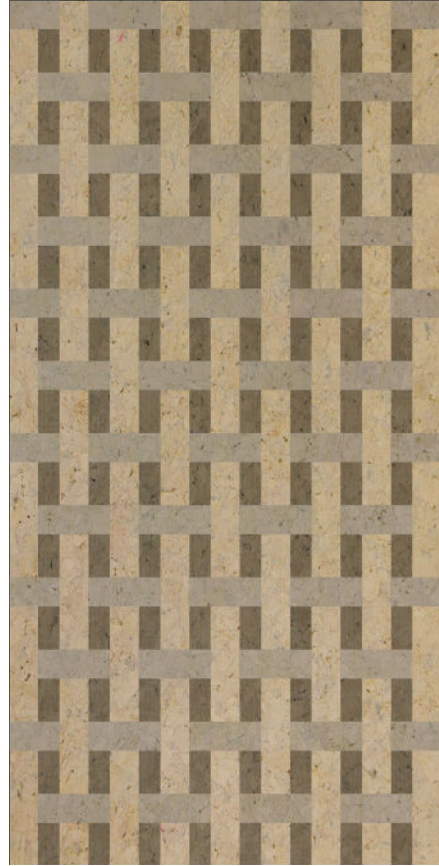
C

- Burgundy
- Terra

D

- Slate
- Ink

Weave



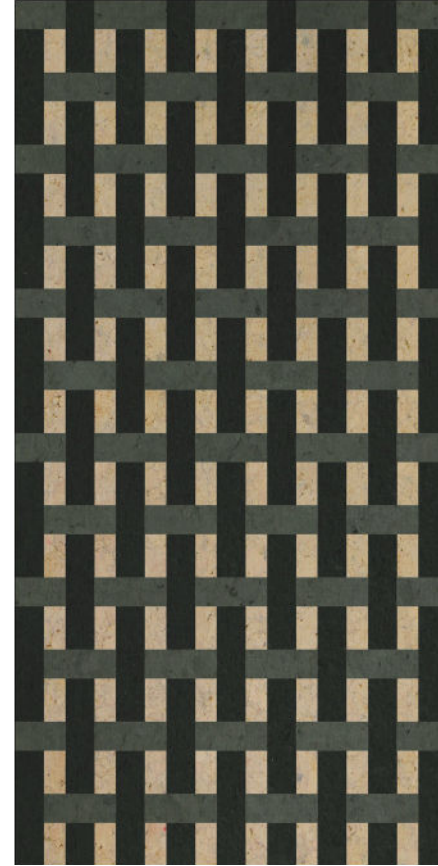
A

- Star
- Stucco
- Driftwood



B

- Fog
- Pine
- Star



C

- Slate
- Balsa
- Star



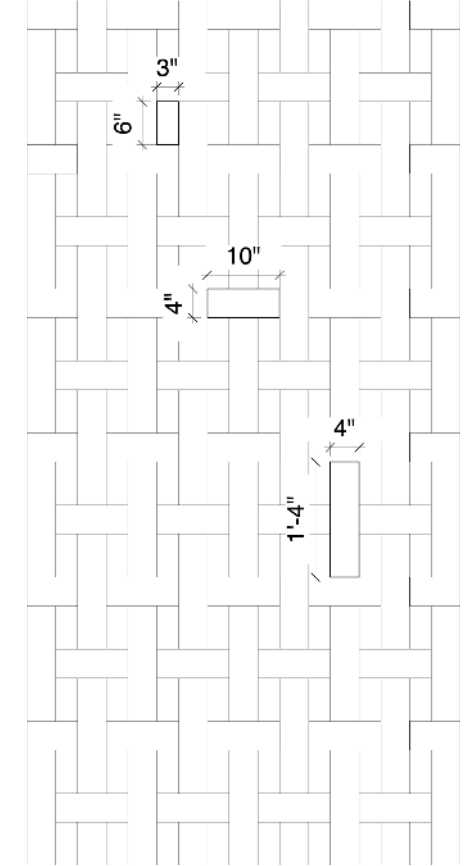
D

- Pine
- Ink
- Driftwood



E

- Slate
- Ink
- Balsa



Lattice 1



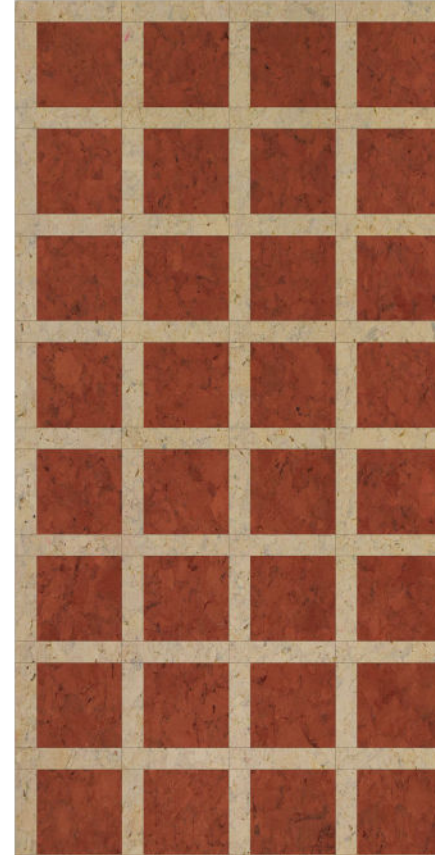
A

- Star
- Stucco



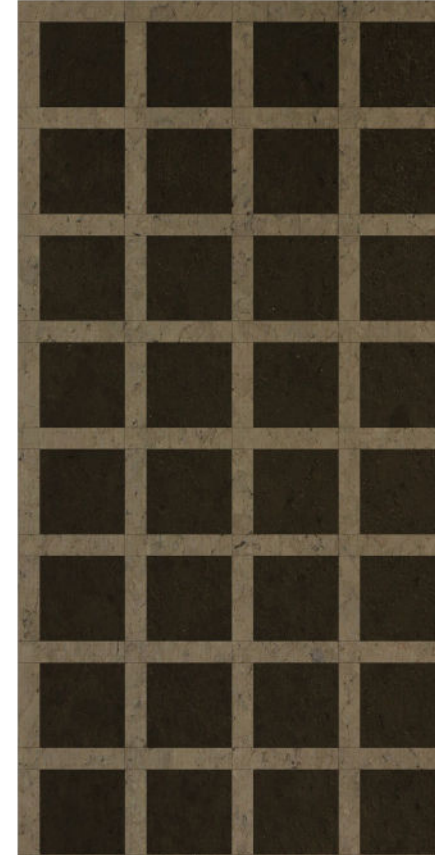
B

- Ink
- Star



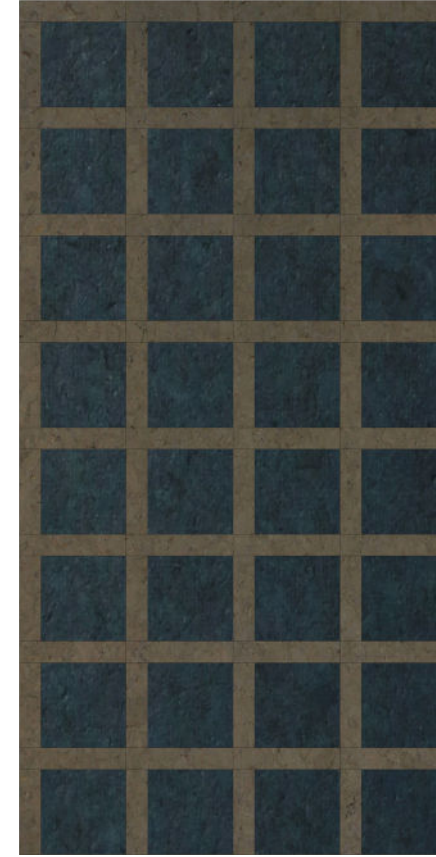
C

- Star
- Terra



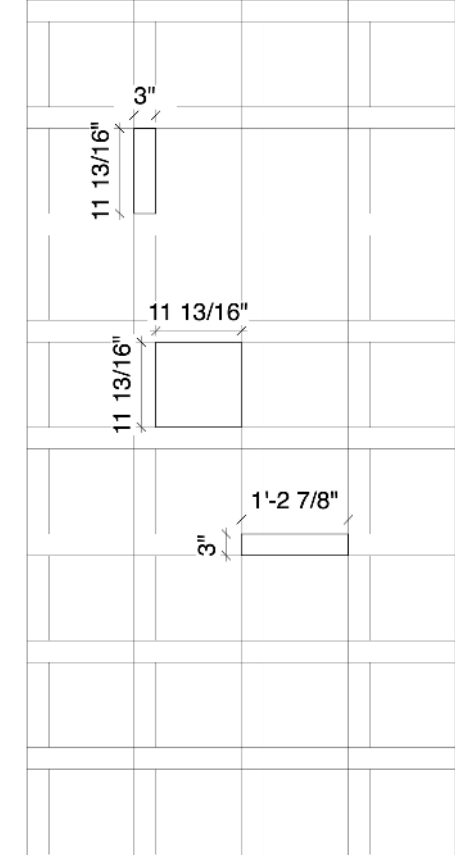
D

- Driftwood
- Otter



E

- Pumice
- Ink



Double Weave Stripe



A

- Star
- Stucco



B

- Stucco
- Otter



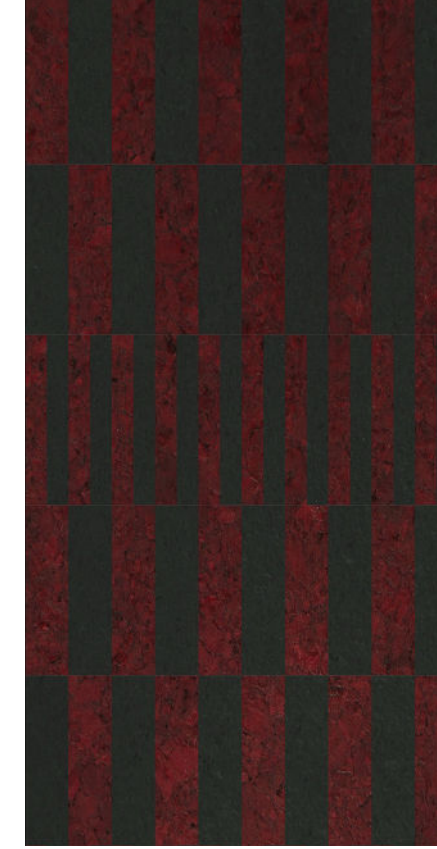
C

- Otter
- Balsa



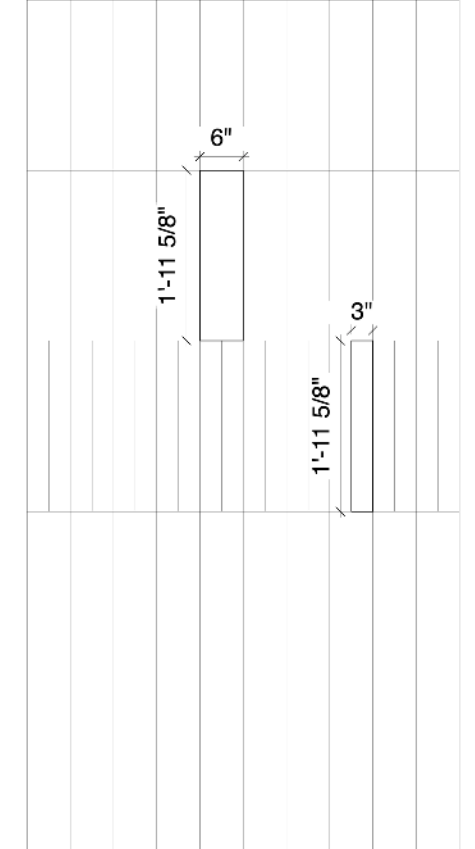
D

- Ink
- Slate

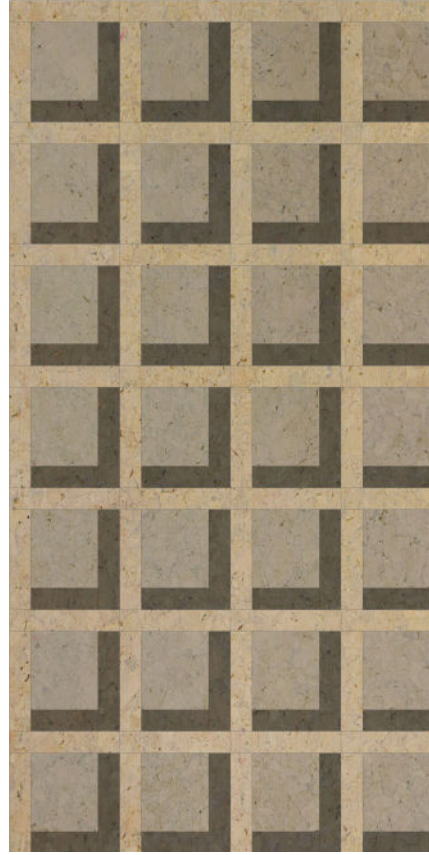


E

- Burgundy
- Slate



Lattice 2



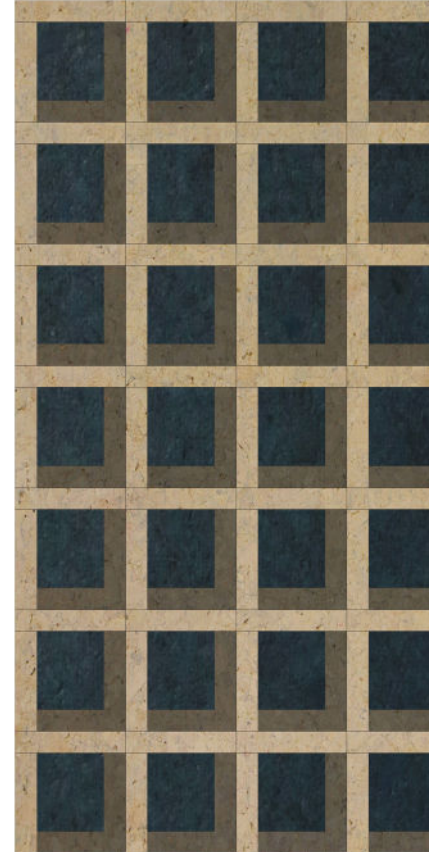
A

- Star
- Stucco
- Pumice



B

- Bisque
- Honey
- American Walnut



C

- Star
- Ink
- Pumice



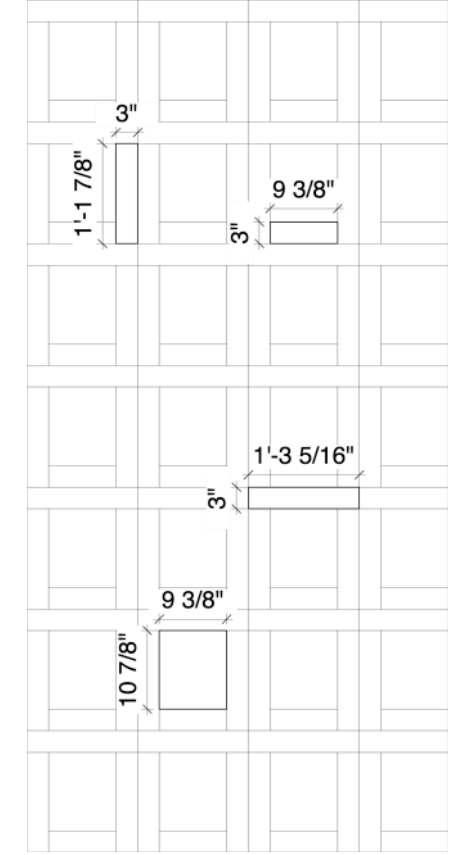
D

- Balsa
- Slate
- Ink



E

- Pumice
- Otter
- Slate



Stacked Brick



A

- Star
- Stucco



B

- Ink
- Stucco



C

- Star
- Slate



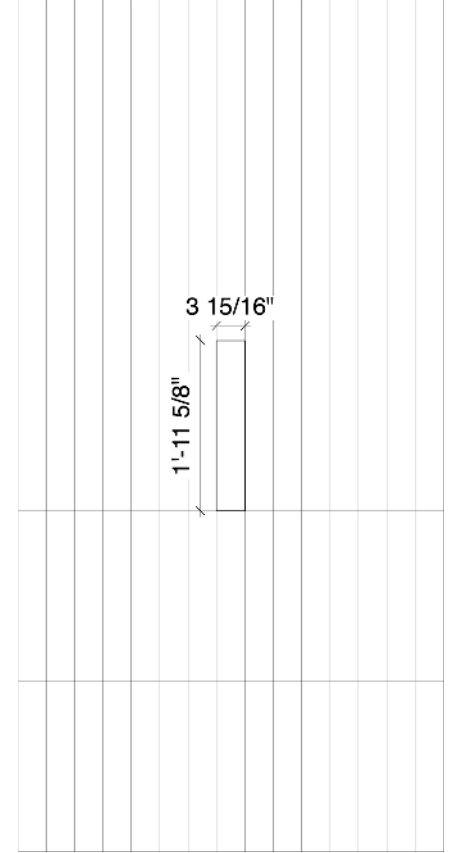
D

- Ink
- Balsa



E

- Pine
- Otter

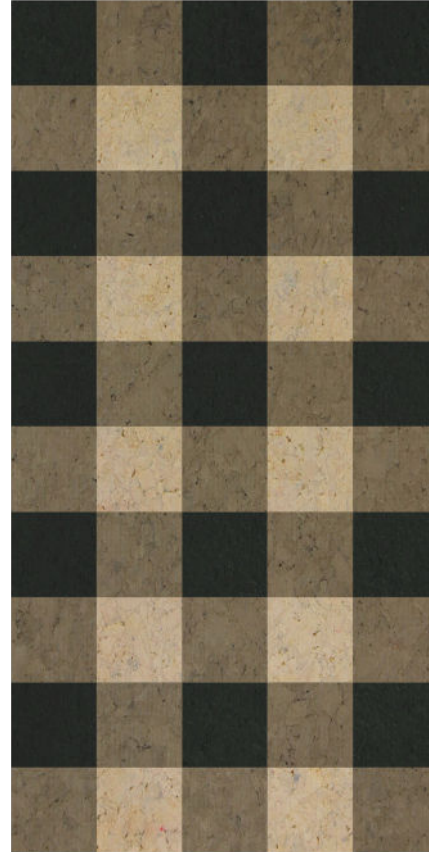


Gingham



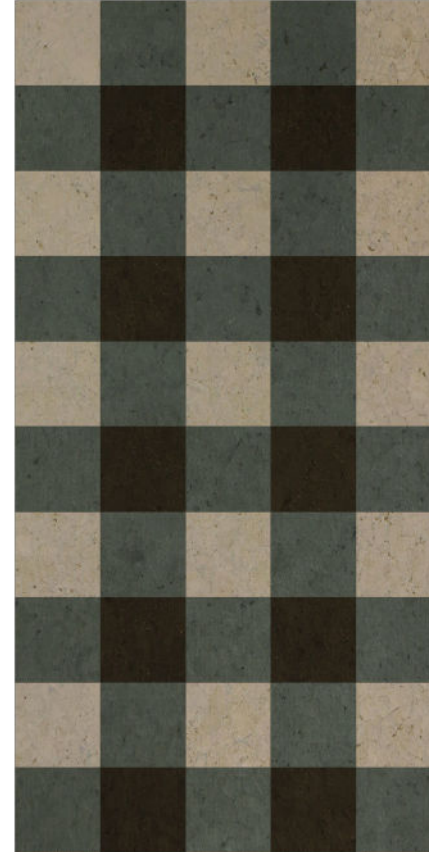
A

- Star
- Stucco
- Driftwood



B

- Slate
- Driftwood
- Star



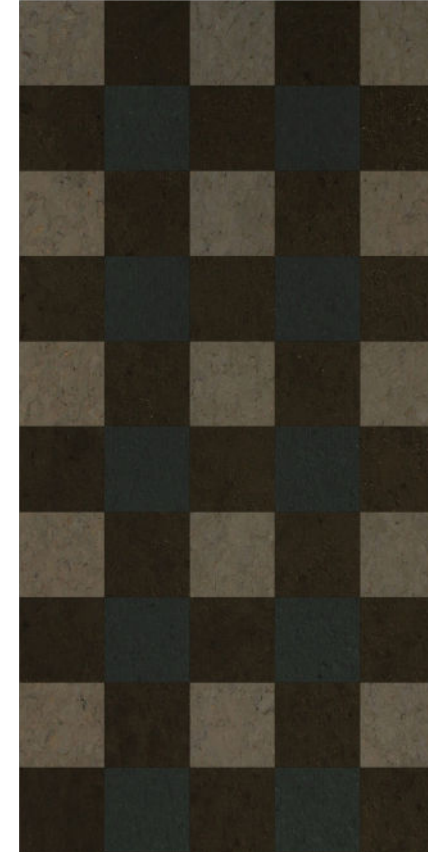
C

- Stucco
- Balsa
- Otter



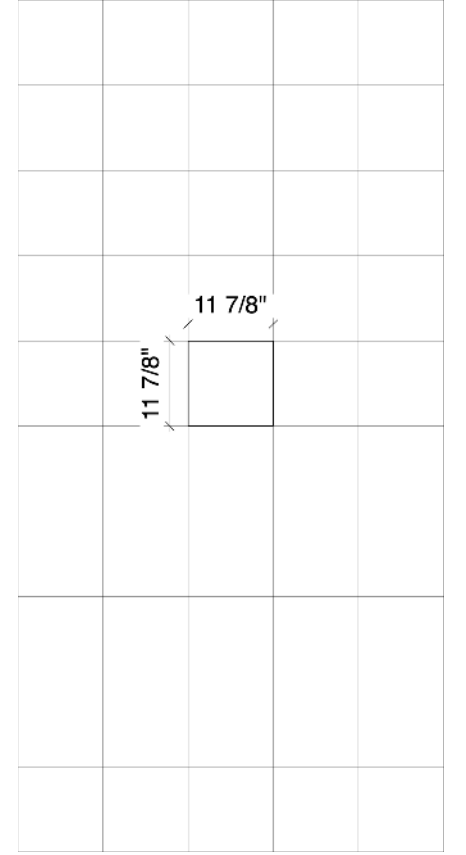
D

- Honey
- Burgundy
- Otter



E

- Pumice
- Otter
- Slate



Lattice 3







A

-  Stucco
-  Driftwood
-  Star
-  Slate







B

-  Stucco
-  Balsa
-  Star
-  Slate






C

-  Slate
-  Star
-  Balsa
-  Pumice







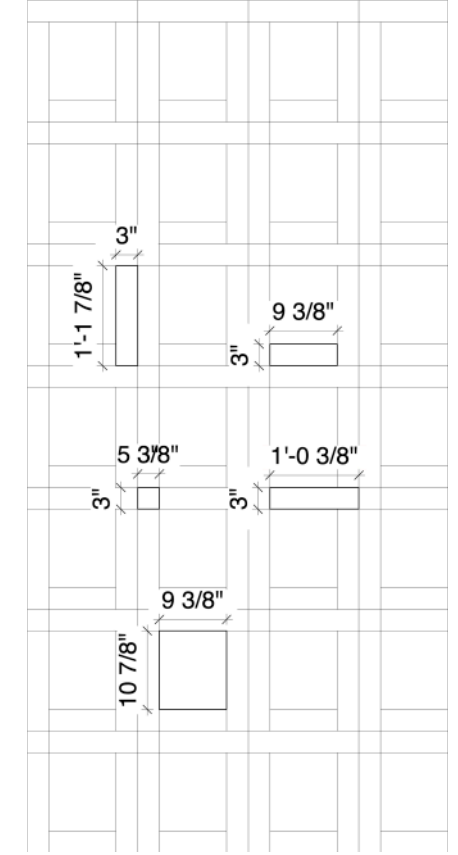
D

-  Otter
-  Bisque
-  Honey
-  American Walnut

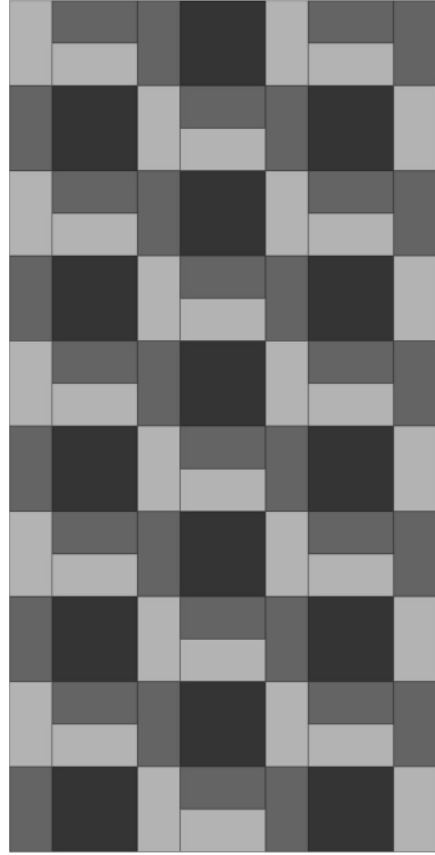


E

-  Star
-  Ink
-  Balsa
-  Slate



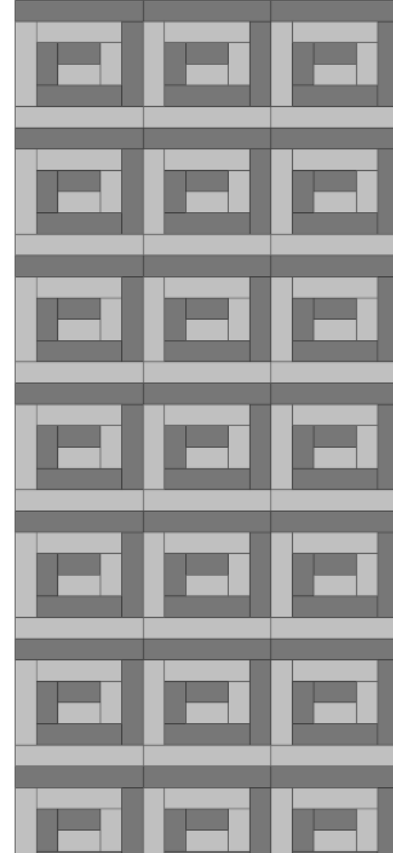
Additional Patterns



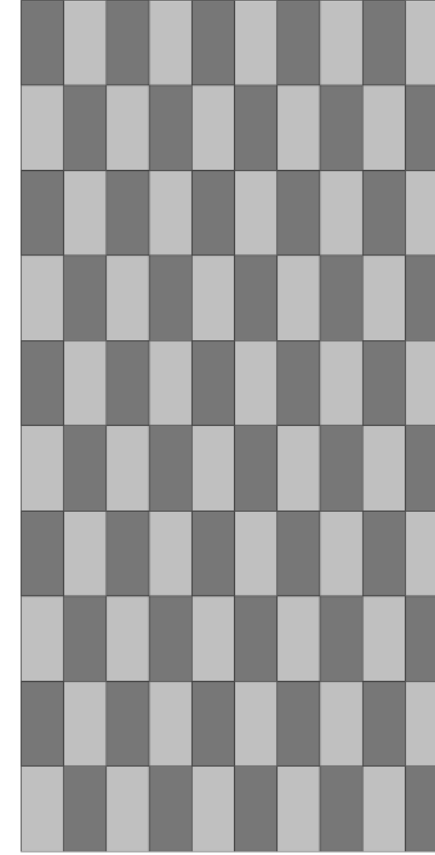
A



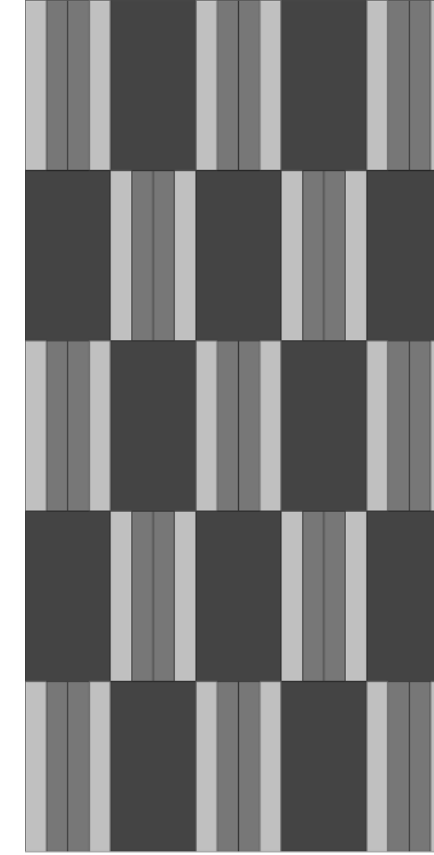
B



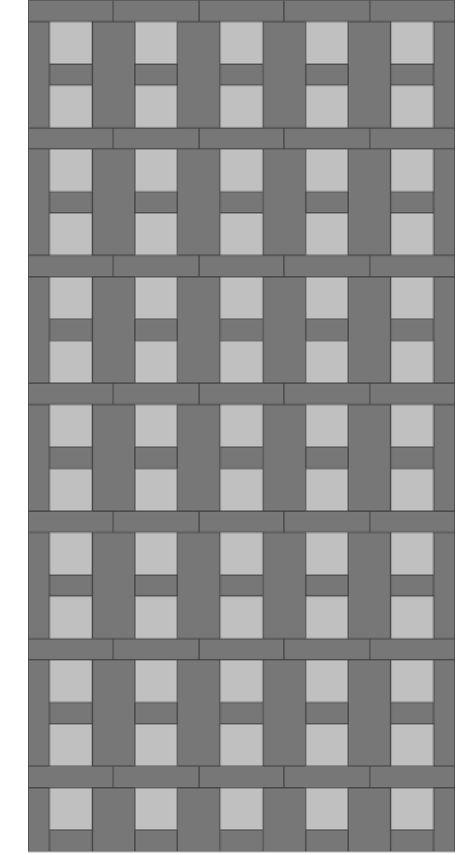
C



D

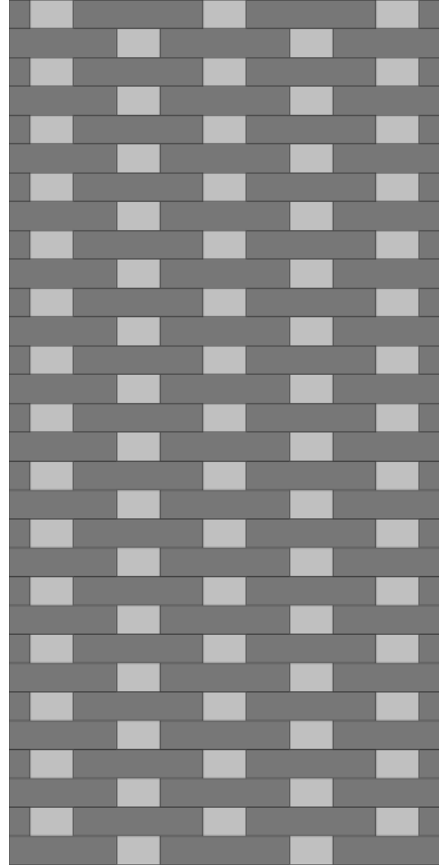


E

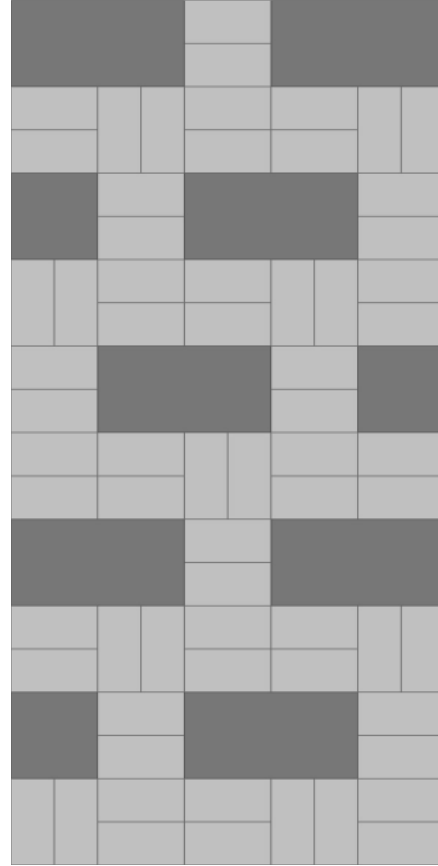


F

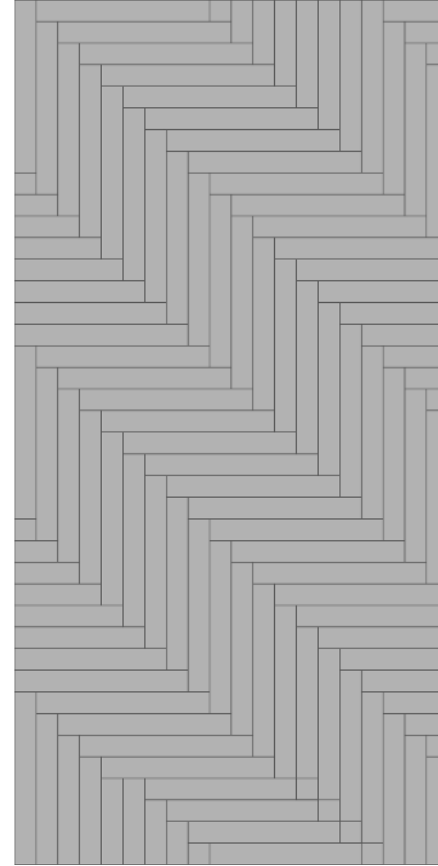
Additional Patterns



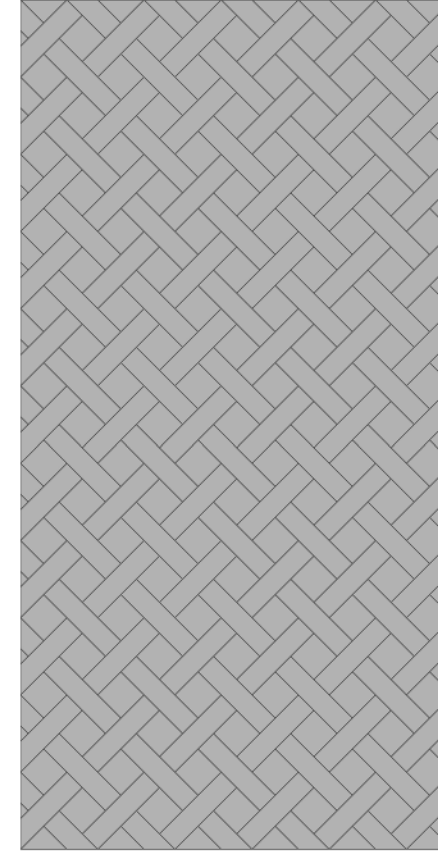
G



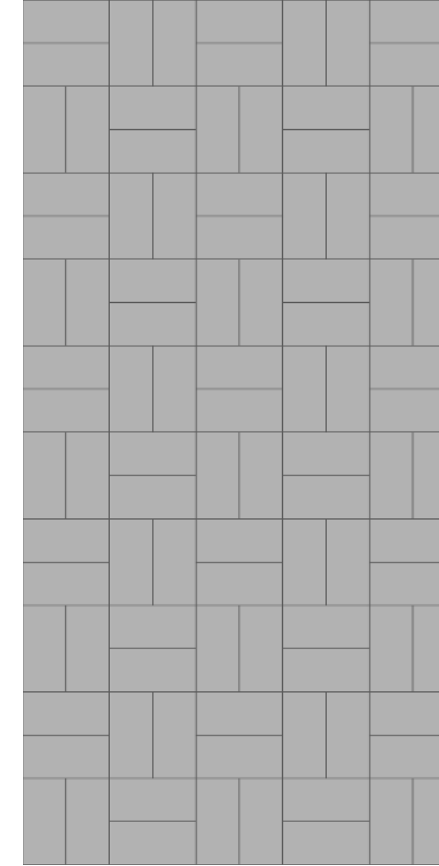
H



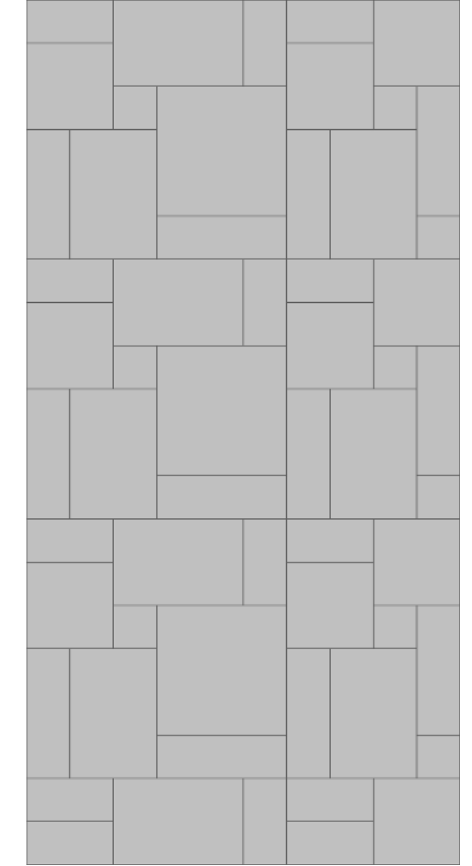
I



J



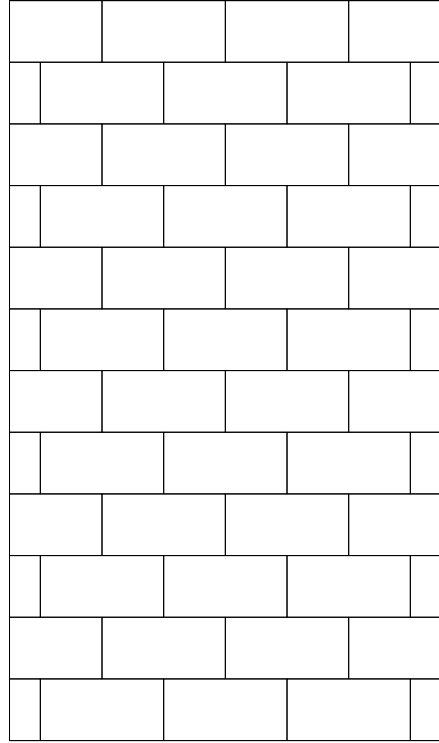
K



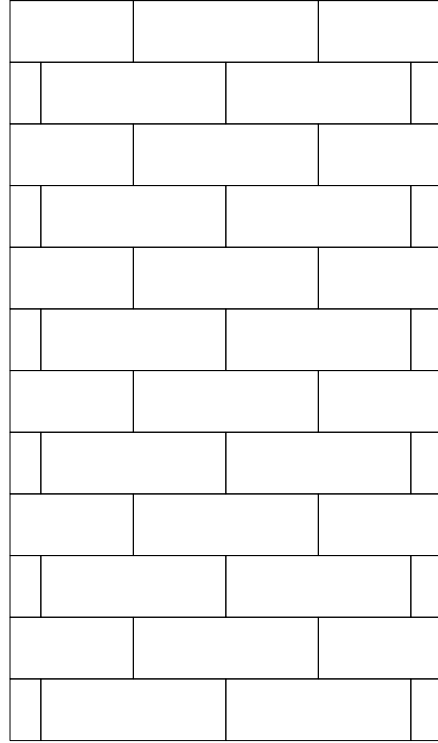
L

Runningbond Patterns

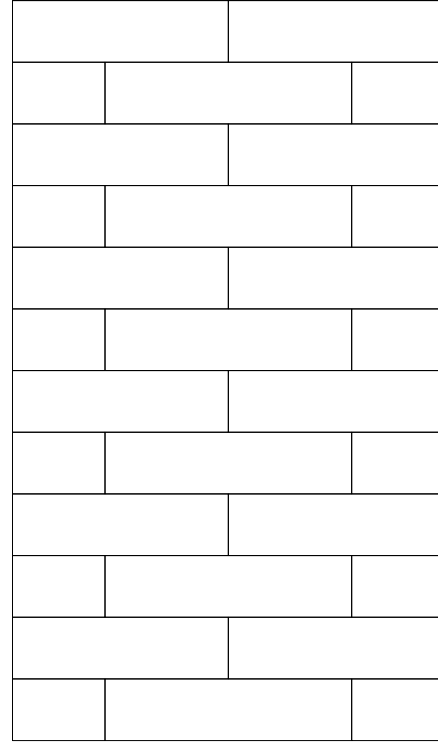
3" x 6"



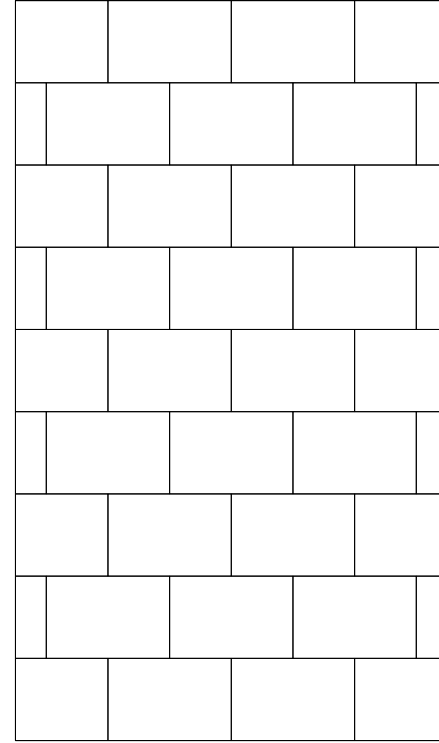
3" x 9"



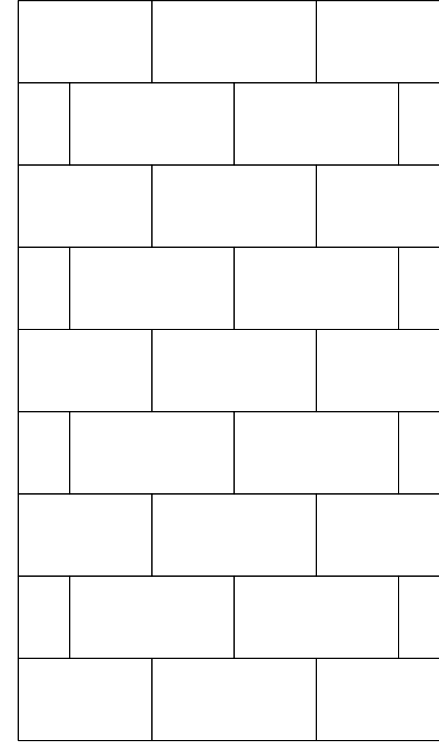
3" x 12"



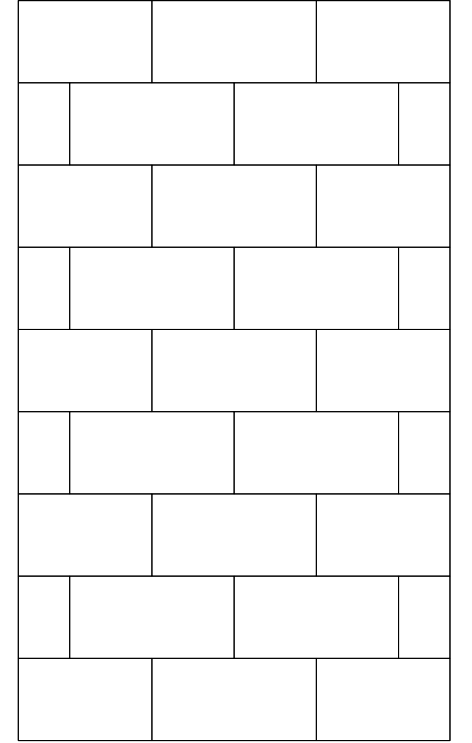
4" x 6"



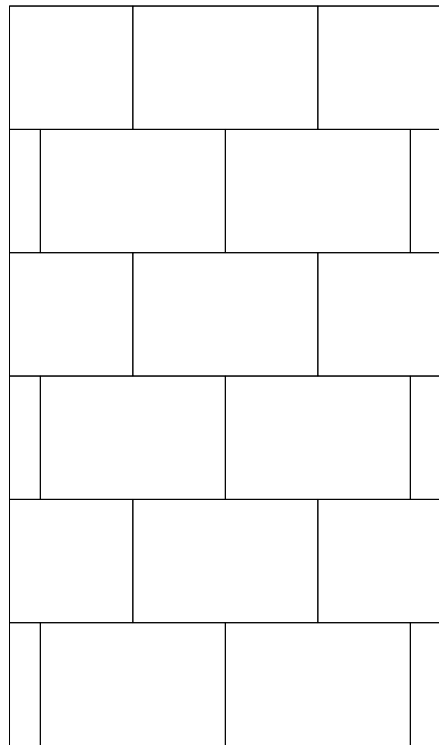
4" x 8"



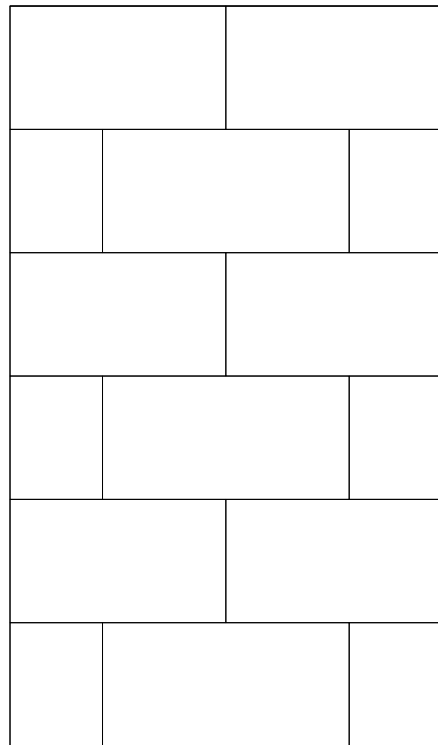
4" x 12"



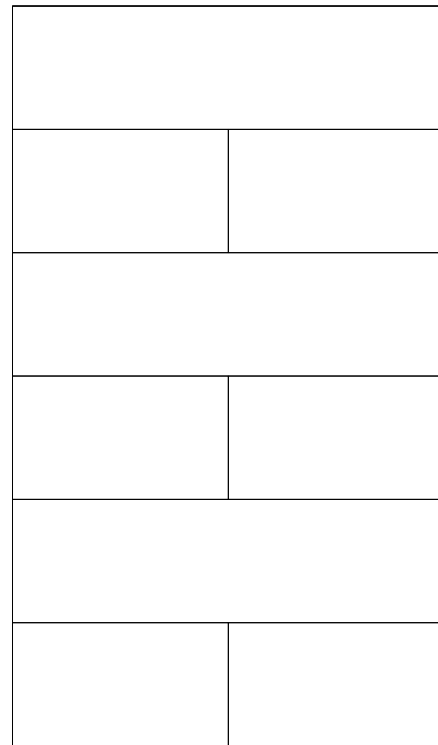
6" x 9"



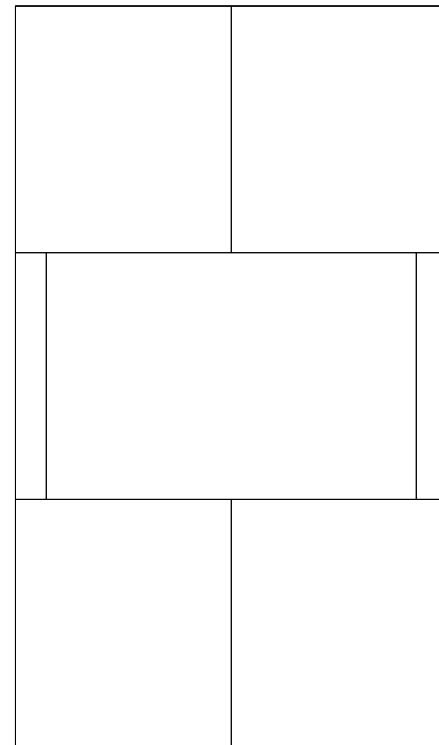
6" x 12"



6" x 24"



12" x 18"



12" x 24"

