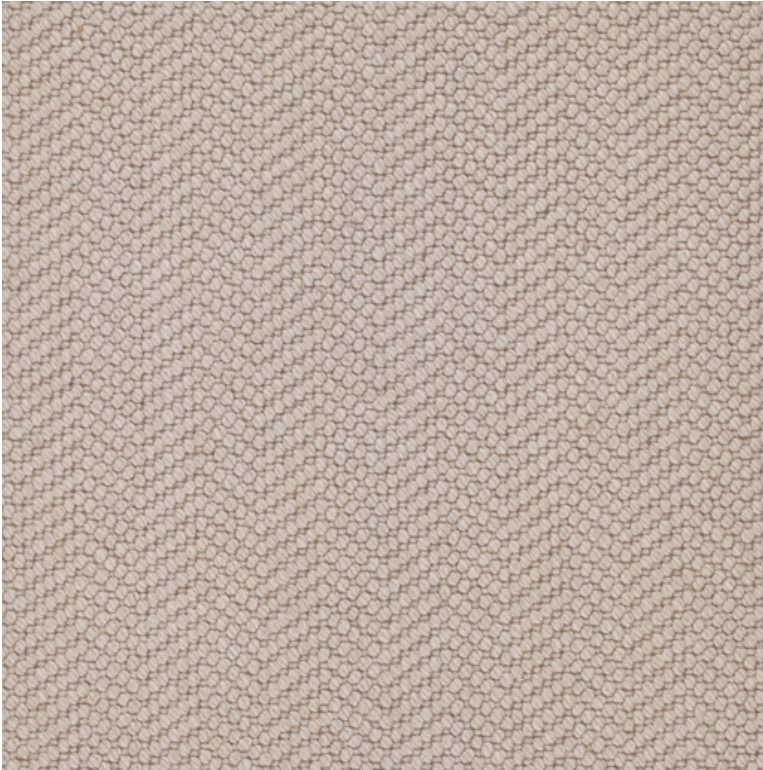


Lands, Broadloom Specifications



Aesthetic



Aesthetic



Argos



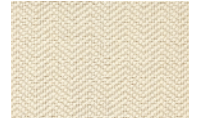
Chelsea



Gibraltar



Olympus



Pure



Tempest

Application:	Moderate commercial and residential
Fiber:	Wool
Width:	13'-2" (4m)
Construction:	Flat woven
Pile weight:	1.575 kg/m ² (46 oz/yd ²)
Total weight:	3.075 kg/m ² (91 oz/yd ²)
Pile height:	3/16" (5 mm)
Total thickness:	13/32" (10 mm)
Flammability:	Class Cfl-S1
Primary backing:	Jute
Country of origin:	Netherlands
Castor chair protectors:	Recommended
Environmental:	LEED MRc6 Eurofins Certified Gold

Lands, Broadloom Maintenance

- The manufacturer recommends a planned maintenance program using Host® low moisture extraction. A planned maintenance program will ensure maximum appearance retention and performance which must include the use of up-right or canister vacuum cleaners with brush-action power heads.
- Dry vacuuming should be carried out in the direction of the ribs.
- To address spillages and keep the daily appearance of your carpet, use Host® dry carpet cleaner or equivalent. Using this dry cleaning system for spots and spills leaves the carpet uniformly clean – no evidence of spot removal.
- If a spot or spill does not come out with a second or third application of Host®, contact your local professional carpet cleaner today. Quick action may prevent a permanent stain setting.
- Do not use other chemicals which could remain active in your carpet or react with the bonding material that secures the face of the carpet to the backing. The use of inappropriate chemicals may cause permanent damage to the carpet. Be cautious also about using off-the-shelf carpet cleaning detergents. Many can leave a sticky residue in the carpet that will result in premature re-soiling.

Regardless of the system you use, please note the following important points:

1. Always install and maintain adequate barrier/entrance matting.
2. Do not use shampoos and cleaners with a spirit base
3. If spillages occur and you do not have an approved spotting kit to-hand, use these rules:
 - Never rub the carpet.
 - Act quickly.
 - The longer a spill is left unattended, the harder it is to remove the stain.
 - Spillages and cleaning solutions should be blotted up by gently pressing a colourfast towel or similarly absorbent material against the affected area.